

**TYPICAL HIGHWAY CROSS SECTION**

TERRAIN TYPE	DESCRIPTION	EMBANKMENT HEIGHTS
1	DRY (ICE POOR) TILL AND OUTWASH DEPOSITS	1.4 m
2	WET (ICE-MEDIUM TO ICE-RICH) TILL AND OUTWASH DEPOSITS	1.4 to 1.6 m
3	WET SILTS AND CLAYS (ICE-RICH)	1.6 to 1.8 m
4	THICK ORGANIC PEATLANDS AND ICE-RICH PERMAFROST	1.8 m

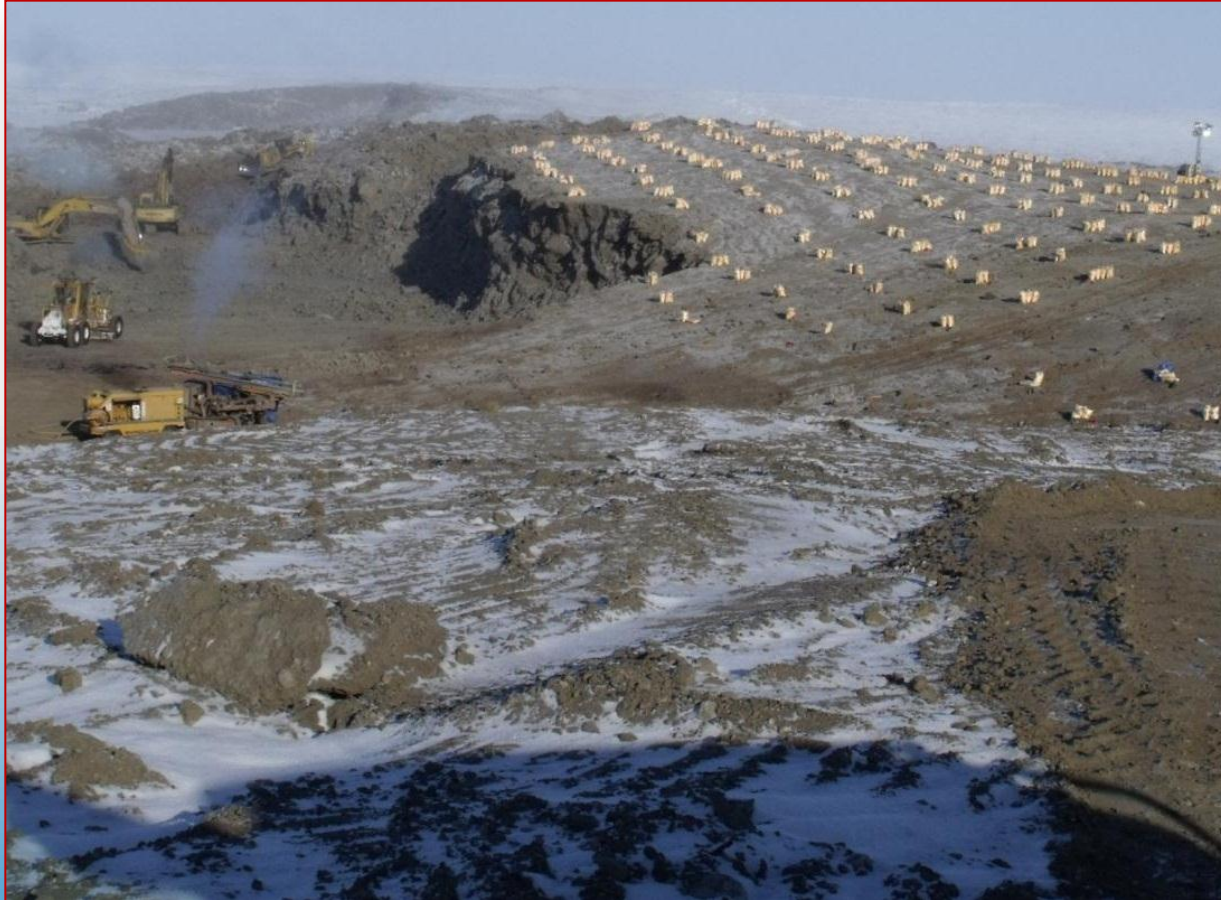


































































Northwest  
Territories Transportation