

## **Appendix III**

### **PHOTOGRAPHS**

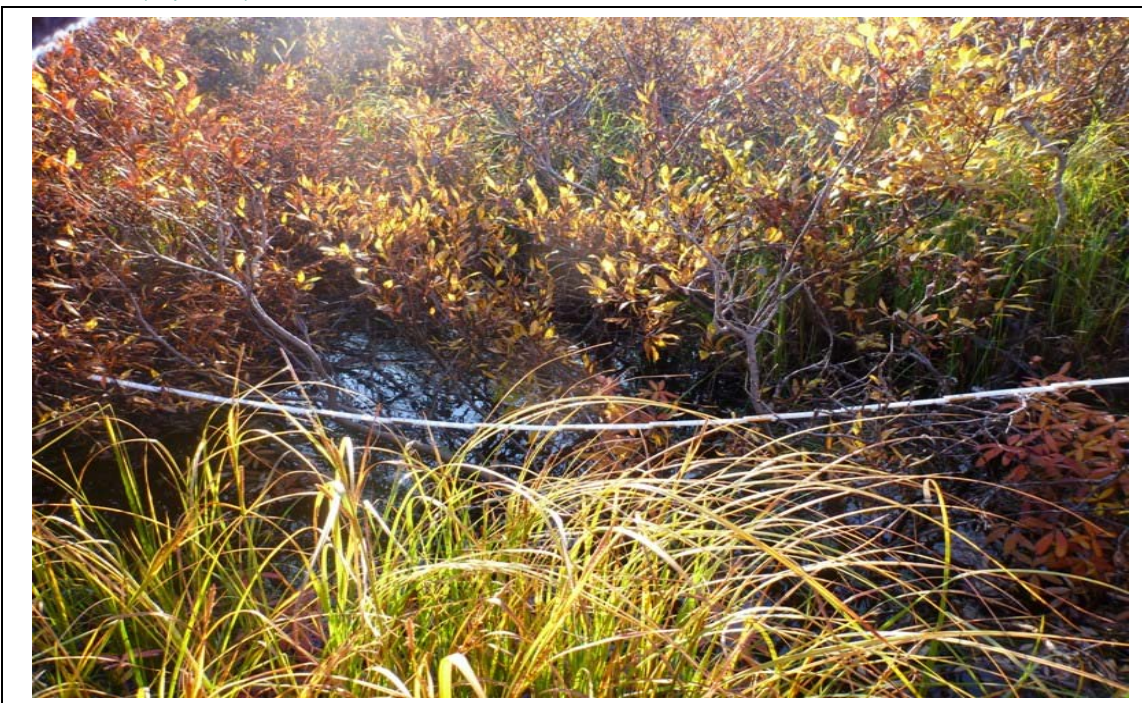


## APPENDIX III PHOTOGRAPHS

### Site: A1-112.3 / A3-106.2



*Photo 1: Upstream view (southwest) of run habitat with overhead cover at proposed crossing A1-112.3 / A3-106.2 (Sept 2011).*



*Photo 2: Downstream view (northeast) of run habitat with overhead cover at proposed crossing A1-112.3 / A3-106.2 (Sept 2011).*



## APPENDIX III PHOTOGRAPHS



*Photo 3: Downstream aerial view (northeast) of proposed crossing A1-112.3 / A3-106.2 (Sept 2011).*





## APPENDIX III PHOTOGRAPHS

### Site: A1-108 / A3-101.9



*Photo 1: View looking downstream (east) of a pocket of standing water with intermittent flow at the proposed crossing A1-108 / A3-101.9 (Sept 2011).*

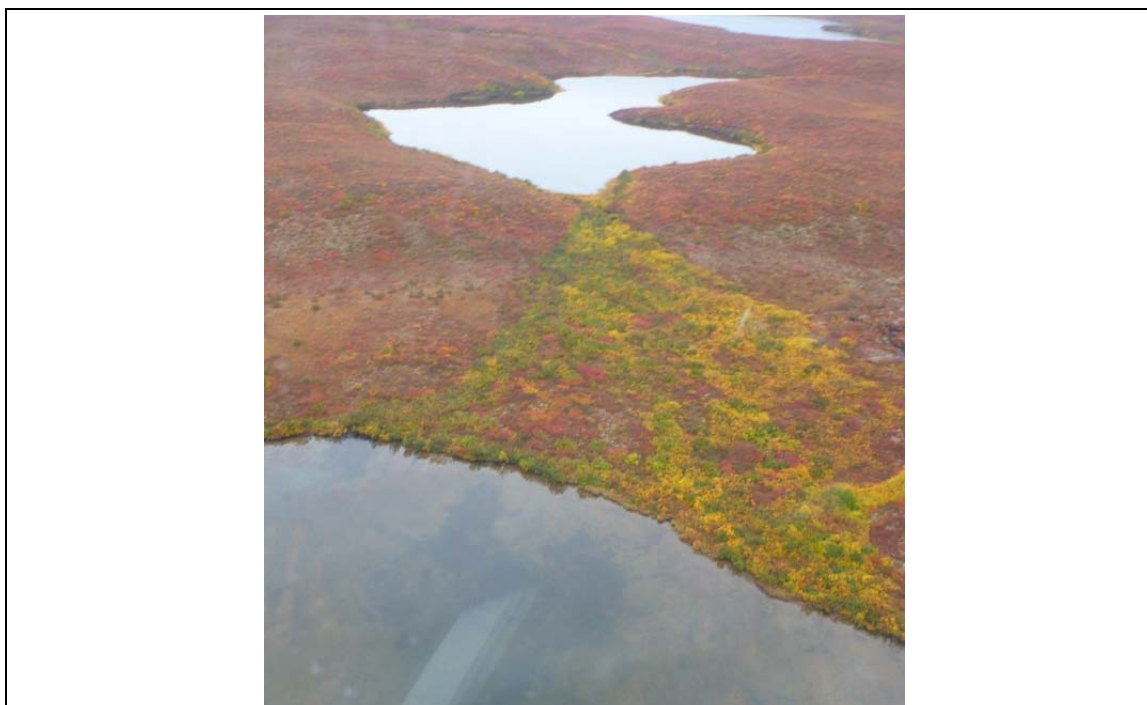


*Photo 2: View looking upstream (west) of a pocket of water with intermittent flow at the proposed crossing A1-108 / A3-101.9 (Sept 2011).*





## APPENDIX III PHOTOGRAPHS



*Photo 3: Upstream aerial view (west) of proposed crossing A1-108 / A3-101.9 (Sept 2011).*



## APPENDIX III PHOTOGRAPHS

### Site: A1-105.5 / A3-99.4



*Photo 1: Upstream view (northwest) with thick overhead cover at proposed crossing A1-105.5 / A3-99.4 (Sept 2011).*

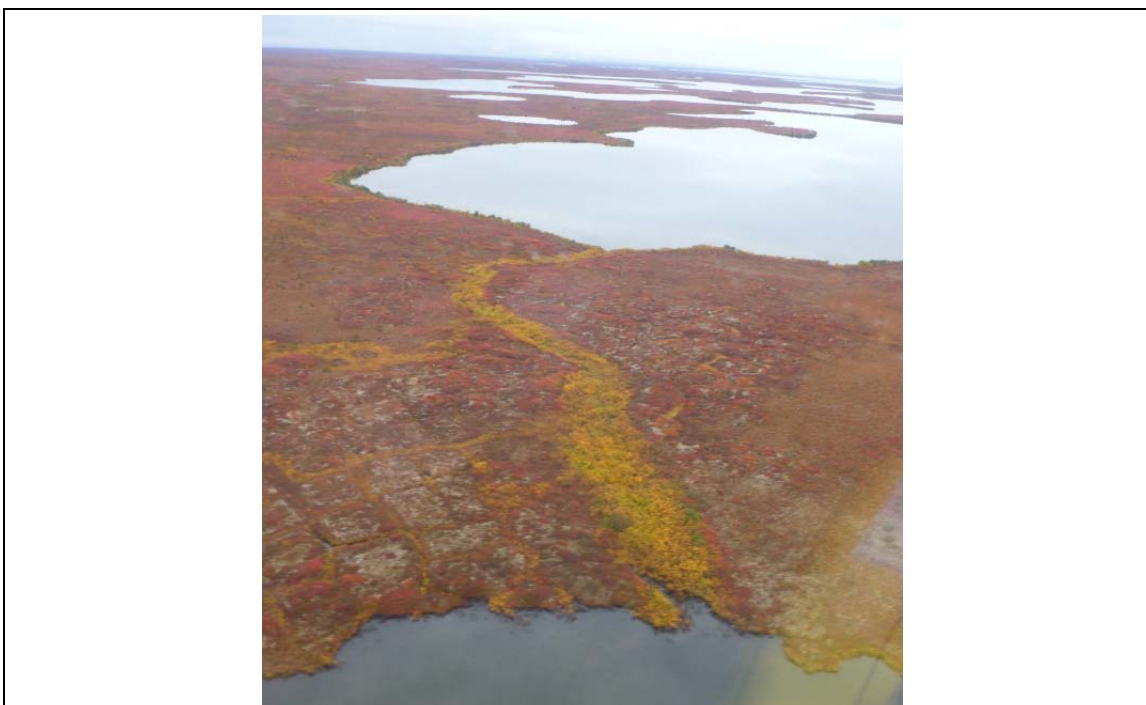


*Photo 2: Downstream view (southeast) with thick overhead cover and shallow water depth at proposed crossing A1-105.5 / A3-99.4 (Sept 2011).*





## APPENDIX III PHOTOGRAPHS



*Photo 3: Downstream view (southeast) of proposed crossing A1-105.5 / A3-99.4 (Sept 2011).*



## APPENDIX III PHOTOGRAPHS

### Site: A1-101.9



*Photo 1: Upstream view (south) of run habitat with instream and overhead cover at proposed crossing A1-101.9 (Sept 2011).*

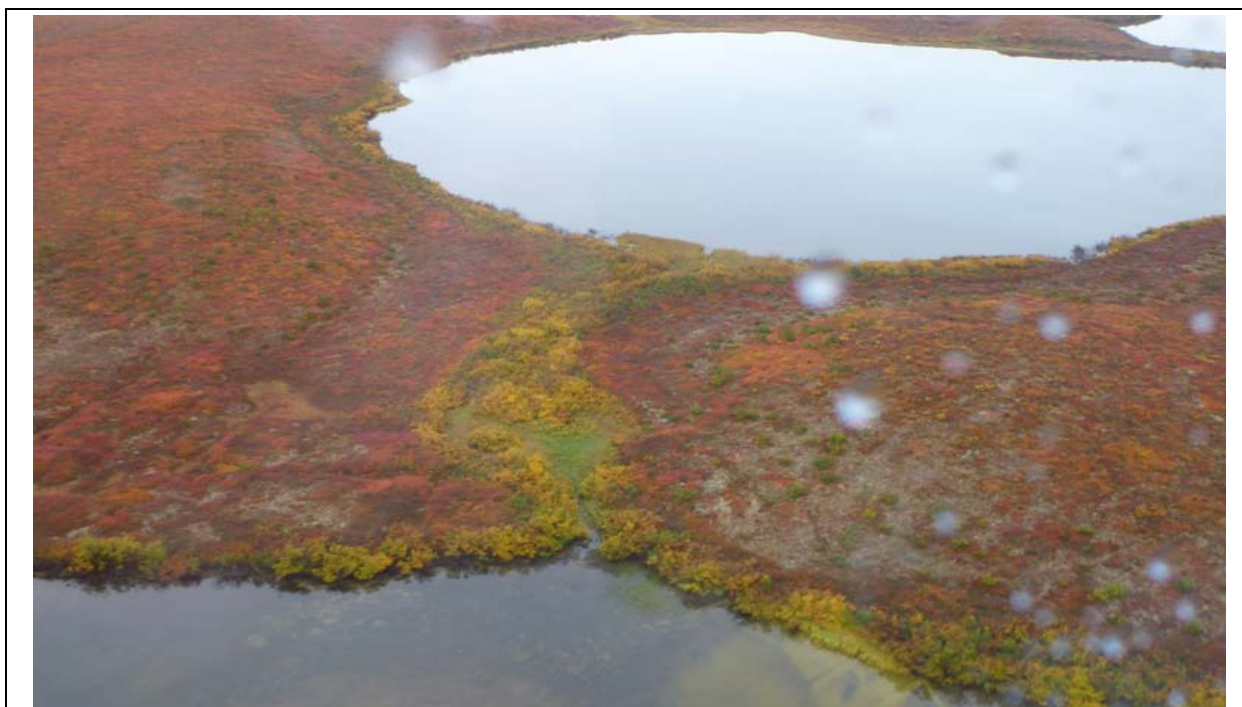


*Photo 2: Downstream view (north) of run habitat with instream and overhead cover at proposed crossing A1-101.9 (Sept 2011).*





## APPENDIX III PHOTOGRAPHS



*Photo 3: Aerial view looking upstream (north) of proposed crossing A1-101.9 between two waterbodies (Sept 2011).*

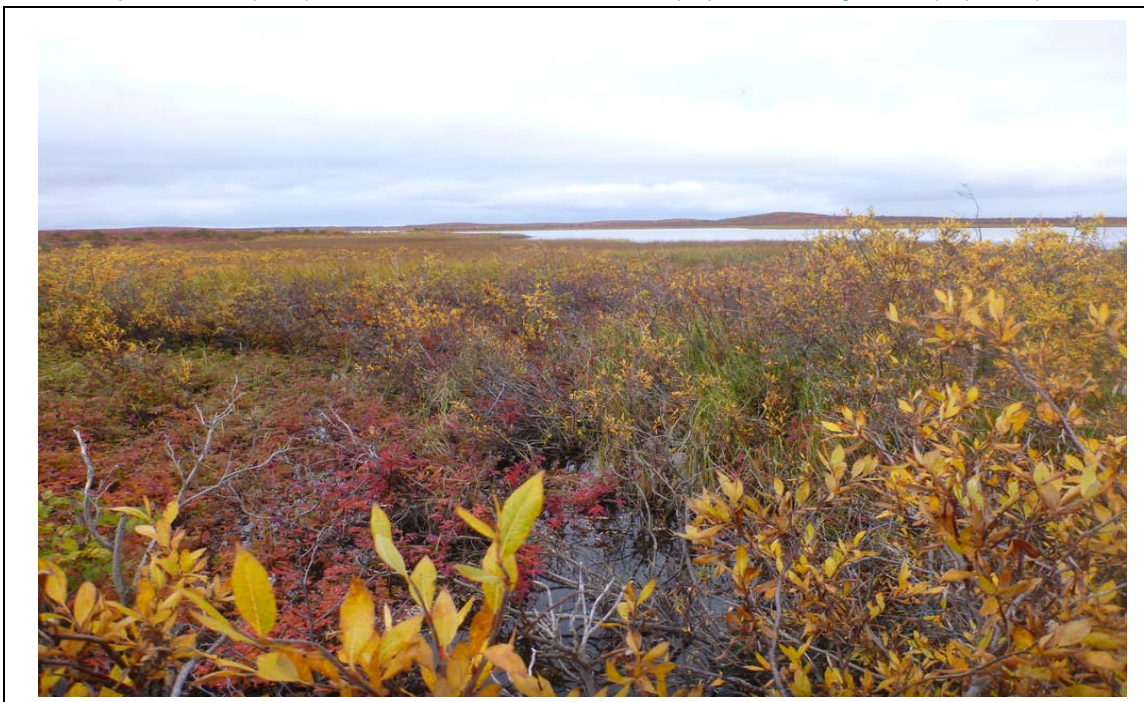


## APPENDIX III PHOTOGRAPHS

### Site: A1-100



*Photo 1: Upstream view (north) of shallow run with overhead cover at proposed crossing A1-100 (Sept 2011).*

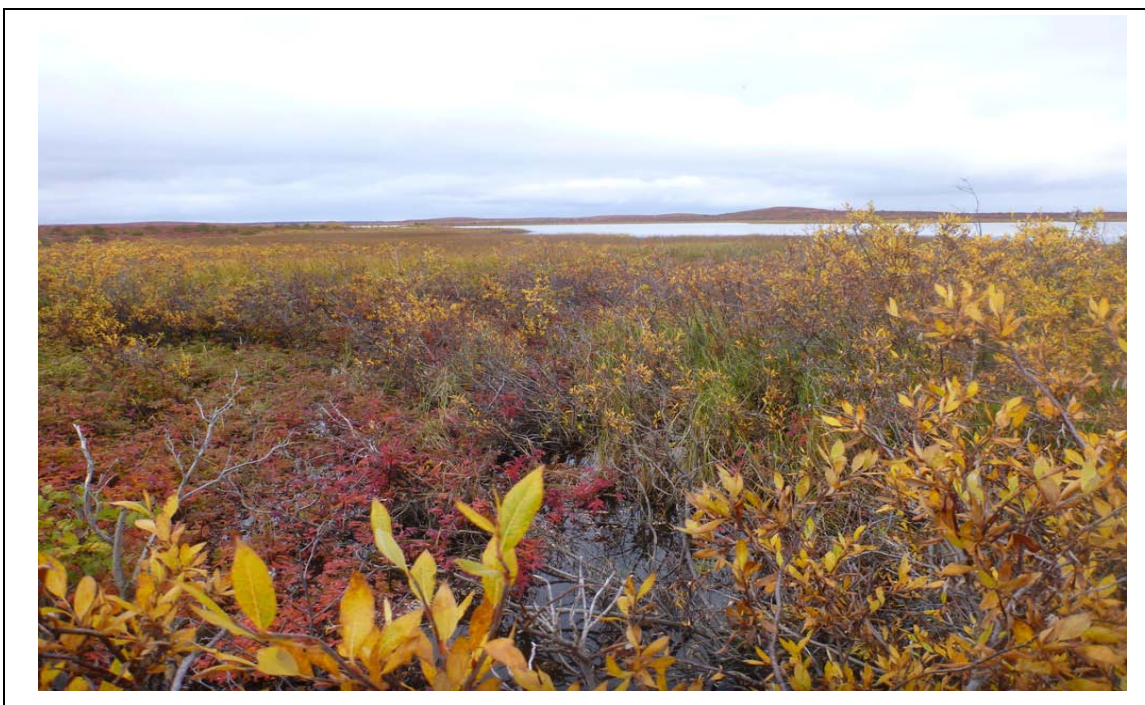


*Photo 2: Downstream view (south) of shallow run at proposed crossing A1-100 South draining to an unnamed waterbody (Sept 2011).*





## APPENDIX III PHOTOGRAPHS



*Photo 3: Downstream view (south) of proposed crossing A1-100 between two waterbodies (Sept 2011).*



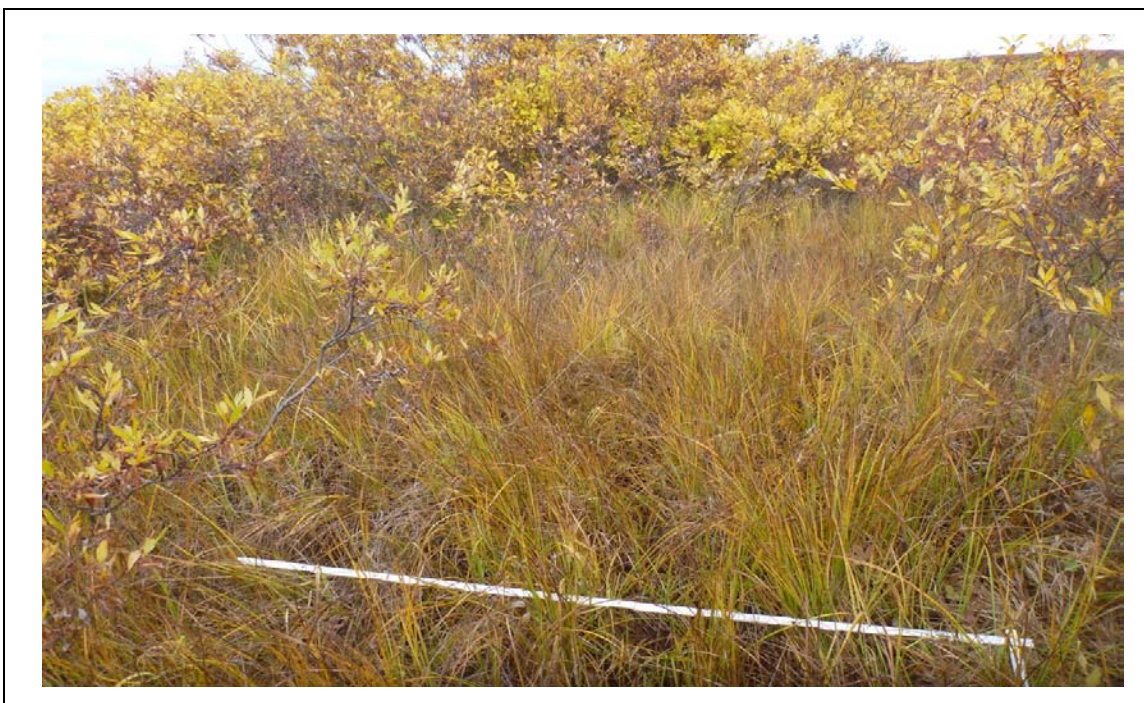


## APPENDIX III PHOTOGRAPHS

### Site: A3-96.4a



*Photo 1: View looking upstream (west) of proposed crossing A3-96.4a, with abundant aquatic vegetation (Sept 2011).*

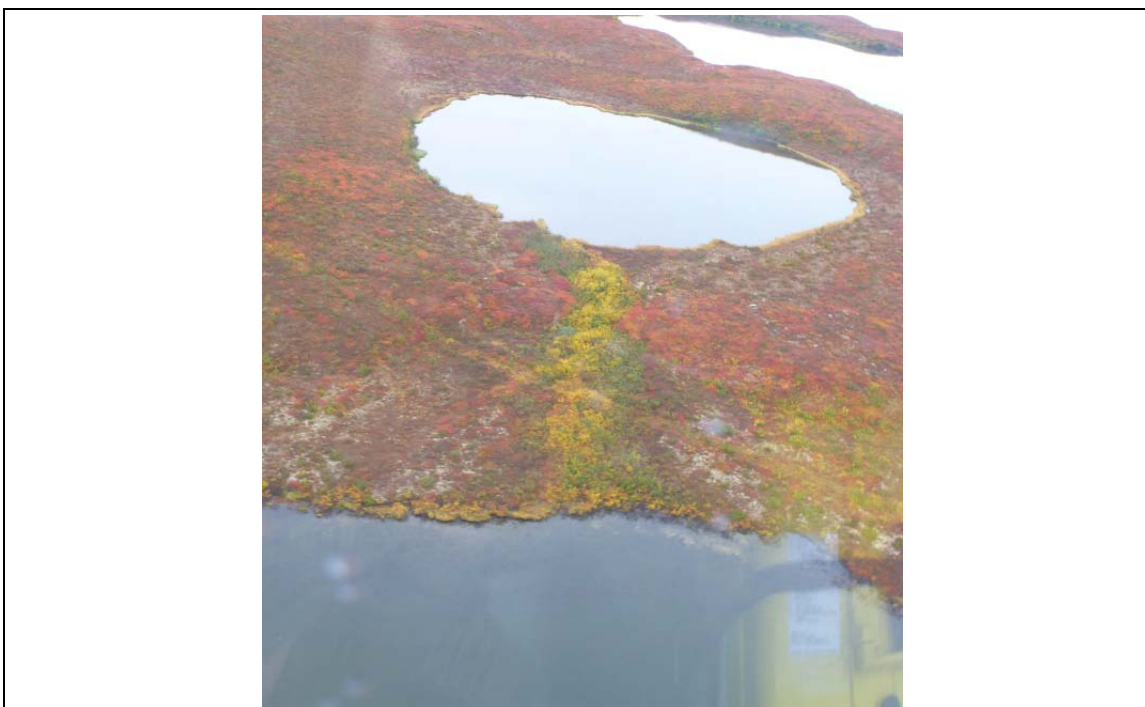


*Photo 2: View looking downstream (east) of proposed crossing A3-96.4a, with abundant aquatic vegetation (Sept 2011).*





## APPENDIX III PHOTOGRAPHS

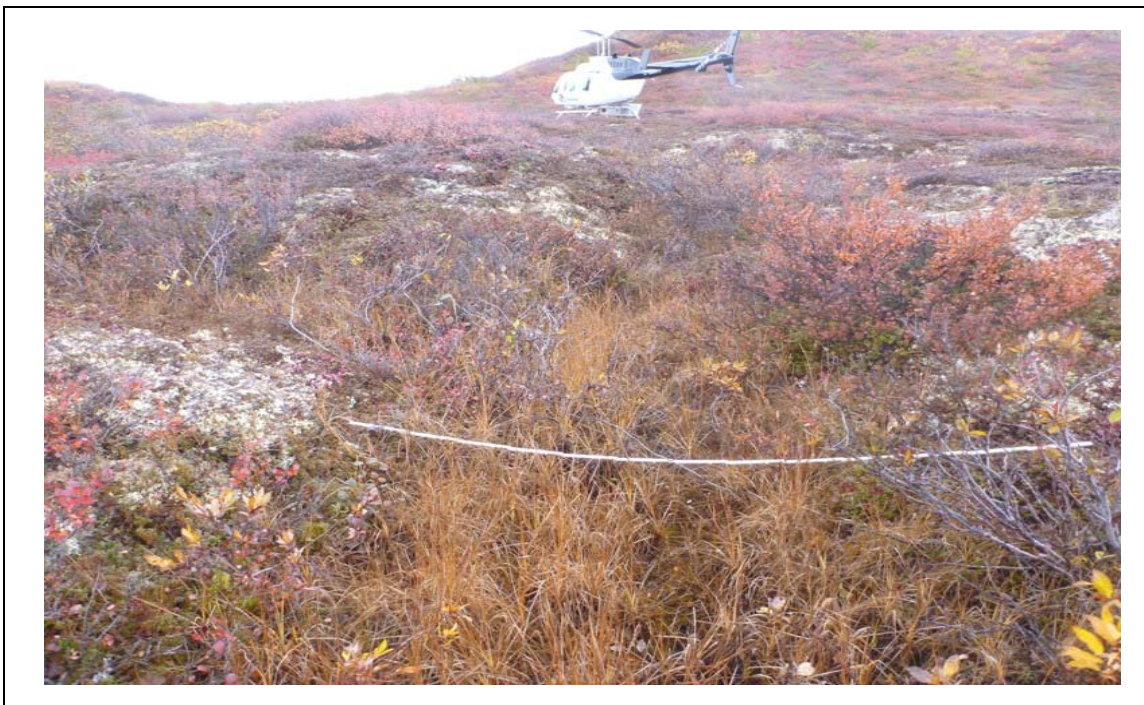


*Photo 3: View looking upstream (west) of proposed crossing A3-96.4a, between 2 waterbodies (Sept 2011).*

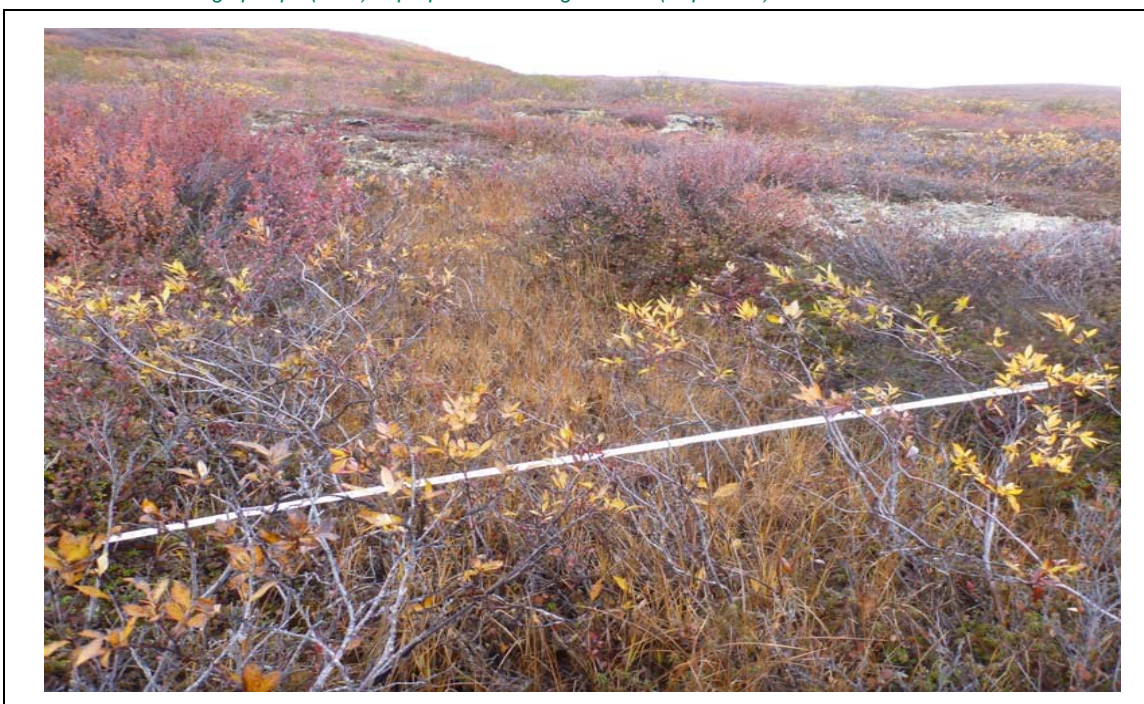


## APPENDIX III PHOTOGRAPHS

### Site: A3-96.6



*Photo 1: View looking upslope (west) of proposed crossing A3-96.6 (Sept 2011).*



*Photo 2: View looking downslope (east) of proposed crossing A3-96.6 (Sept 2011).*





## APPENDIX III PHOTOGRAPHS



*Photo3: Overview of proposed crossing A3-96.6 between 3 unnamed waterbodies (Sept 2011).*

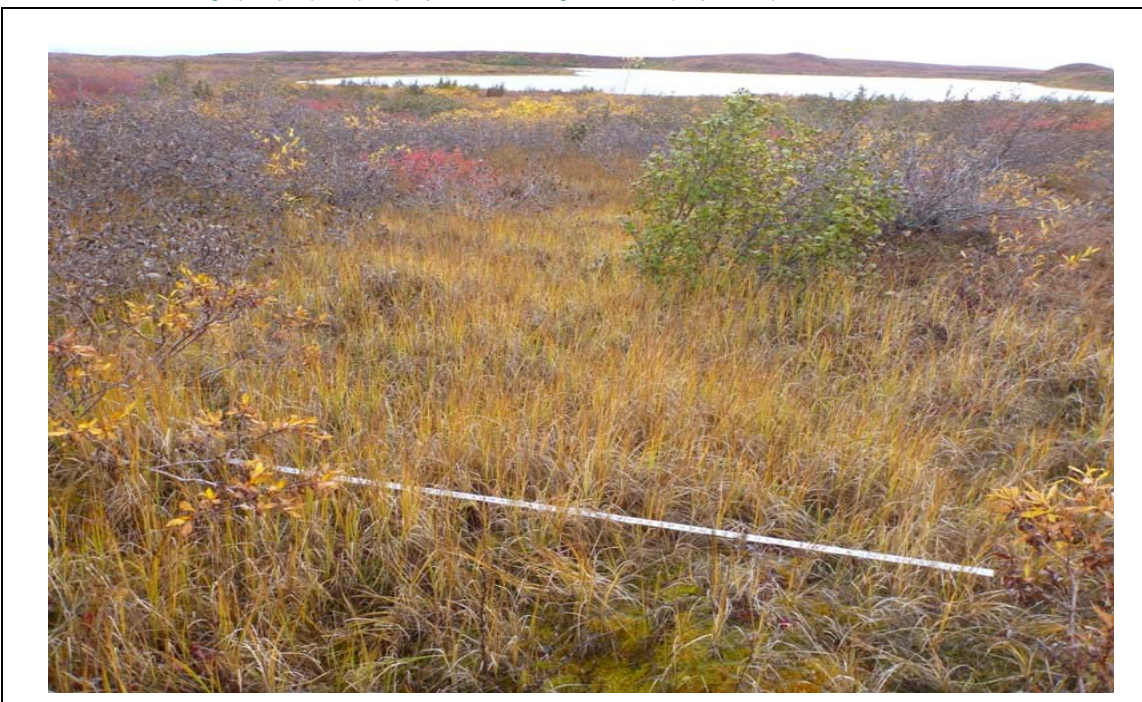


## APPENDIX III PHOTOGRAPHS

### Site: A3-96.4b



*Photo 1: View looking upslope (west) of proposed crossing A3-96.4b (Sept 2011).*



*Photo 2: View looking downslope (east) of proposed crossing A3-96.4b to ward an unnamed waterbody (Sept 2011).*





## APPENDIX III PHOTOGRAPHS



*Photo 3: Downstream view (east of) proposed crossing A3-96.4b (Sept 2011).*



## APPENDIX III PHOTOGRAPHS

### Site: A3-94.7



*Photo 1: View looking upstream (west) of proposed crossing A3-94.7, with abundant overhead cover (Sept 2011).*



*Photo 2: View looking downstream (east) of proposed crossing A3-94.7, with abundant overhead cover (Sept 2011).*





## APPENDIX III PHOTOGRAPHS



*Photo 3: Upstream view of proposed crossing A3-94.7 between unnamed waterbodies (Sept 2011).*

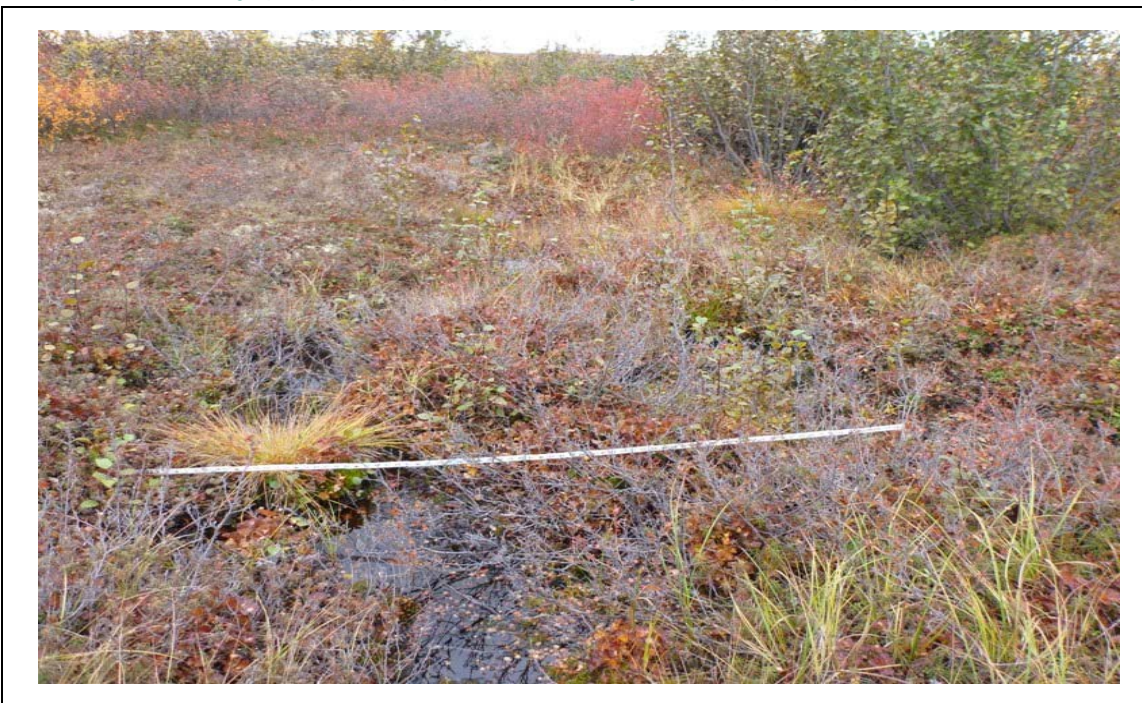


## APPENDIX III PHOTOGRAPHS

### Site: A3-92.8



*Photo 1: View looking upslope (west) of proposed crossing A3-92.8 (Sept 2011).*



*Photo 2: View looking downslope (east) of proposed crossing A3-92.8 (Sept 2011).*



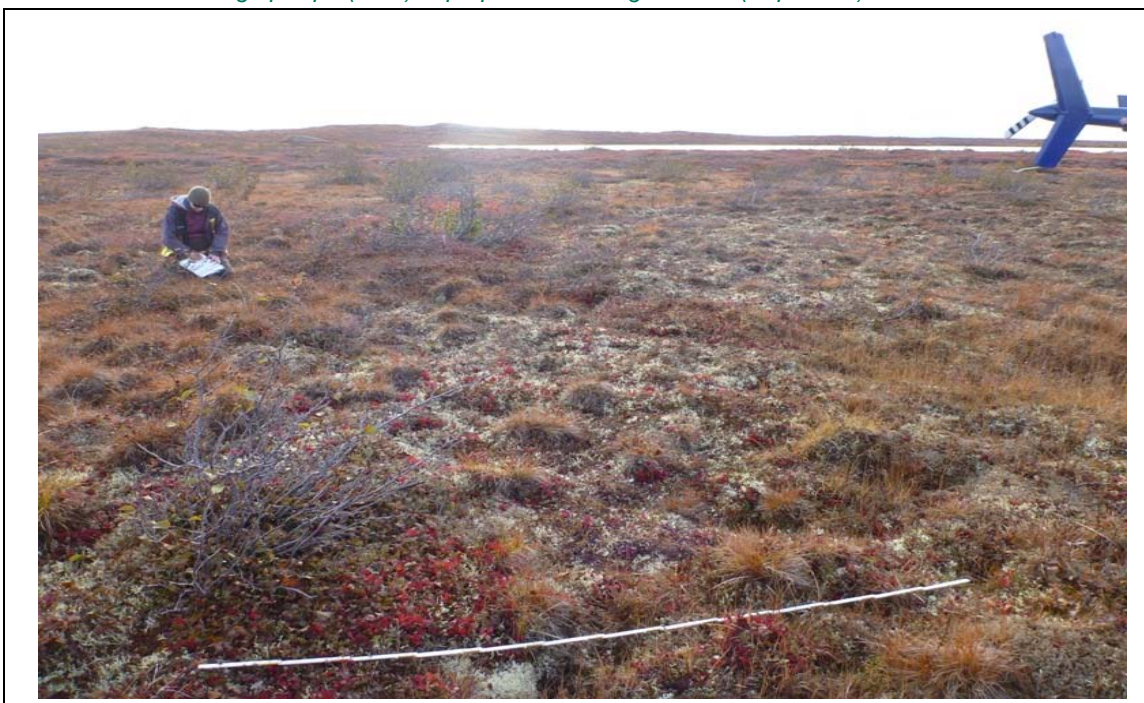


## APPENDIX III PHOTOGRAPHS

### Site: A3-92.4



*Photo 1: View looking upslope (west) of proposed crossing A3-92.4 (Sept 2011).*



*Photo 2: View looking downslope (east) of proposed crossing A3-92.4 (Sept 2011).*



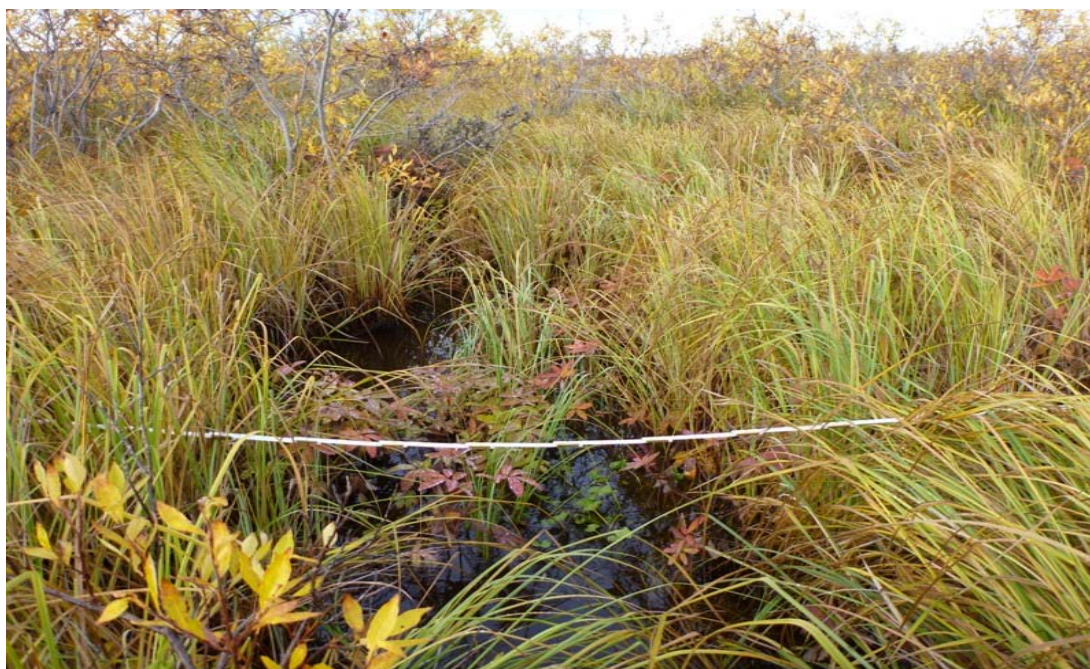


## APPENDIX III PHOTOGRAPHS

### Site: A3-91.9



*Photo 1: View looking upstream (west) of proposed crossing A3-91.9 (Sept 2011).*

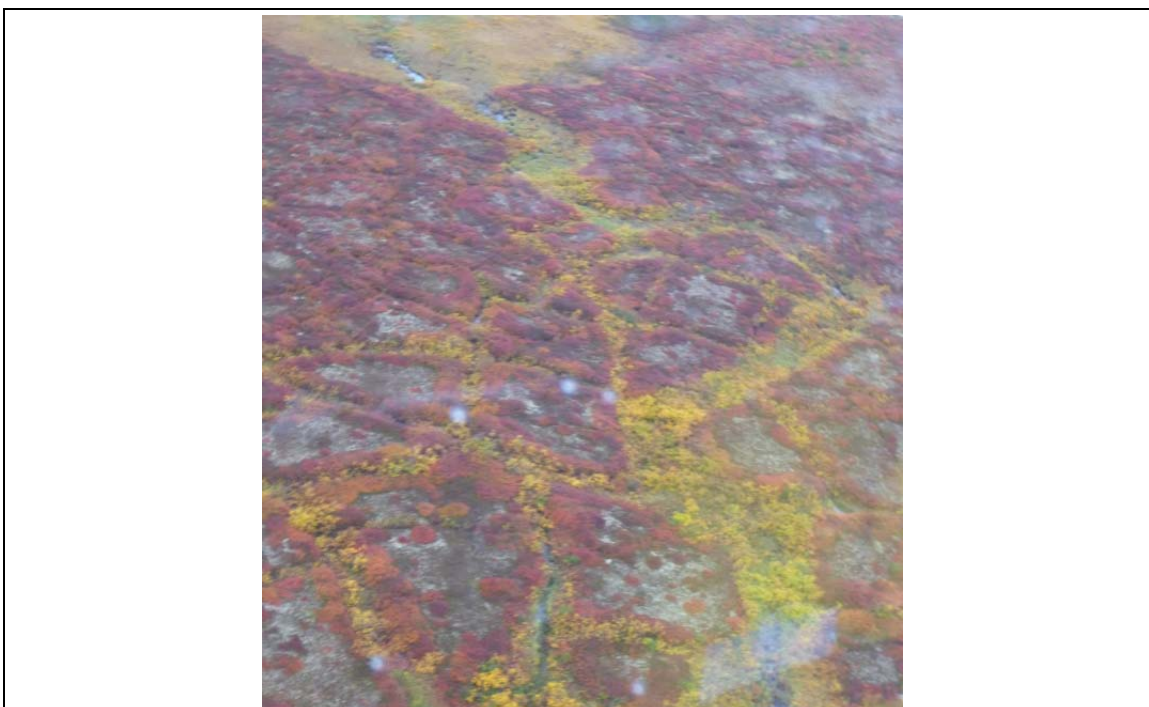


*Photo 2: View looking downstream (east) of proposed crossing A3-91.9 (Sept 2011).*





## APPENDIX III PHOTOGRAPHS

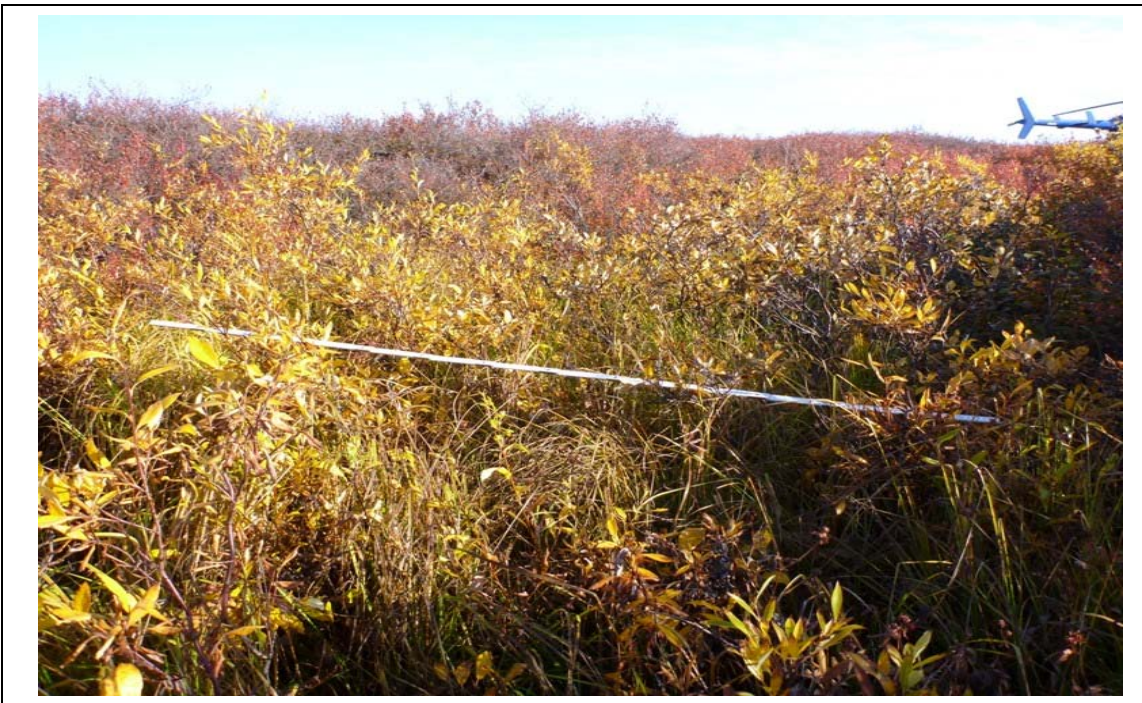


*Photo 3: Aerial view looking upstream (west) of proposed crossing A3-91.9 (Sept 2011).*



## APPENDIX III PHOTOGRAPHS

### Site: A3-88.9



*Photo 1: View looking upstream (west) of proposed crossing A3-88.9 (Sept 2011).*

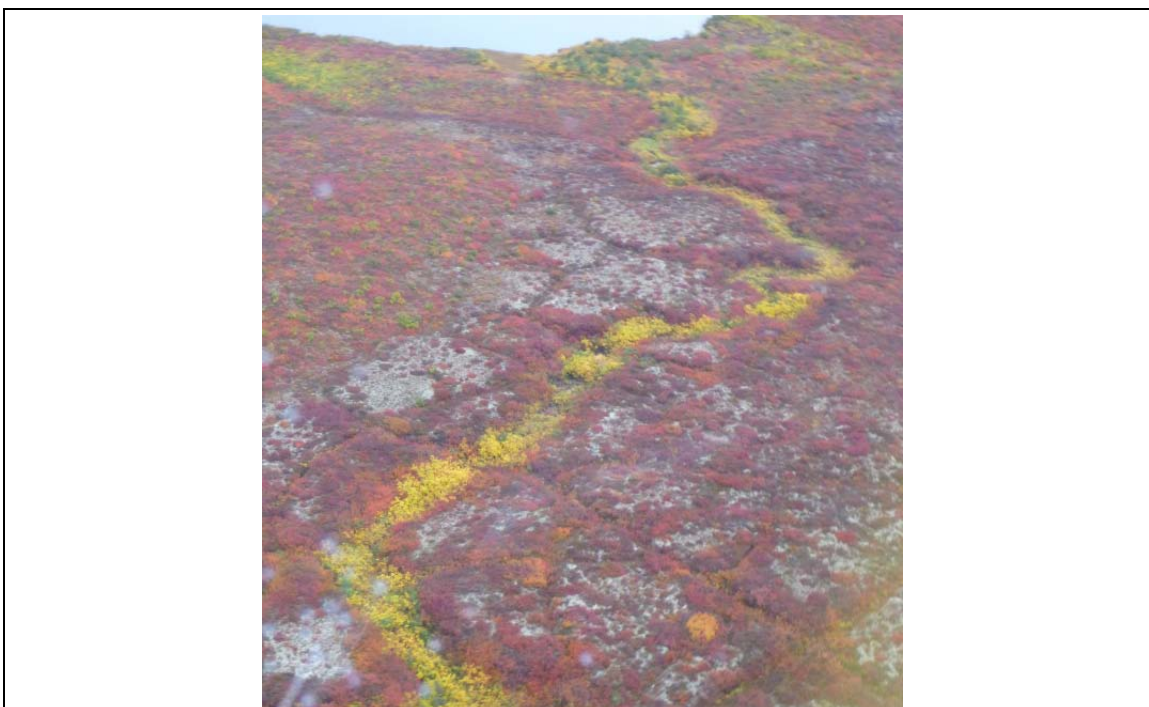


*Photo 2: View looking downstream (east) of proposed crossing A3-88.9 (Sept 2011).*





## APPENDIX III PHOTOGRAPHS



*Photo 3: Aerial view looking upstream (east) of proposed crossing A3-88.9 (Sept 2011).*



## APPENDIX III PHOTOGRAPHS

### Site: 1.3



*Photo 1: View looking upslope (west) of proposed crossing 1.3 (Sept 2011).*



*Photo 2: View looking downslope (east) of proposed crossing 1.3 (Sept 2011).*





## APPENDIX III PHOTOGRAPHS

### Site: 8.2



*Photo 1: View looking upstream (west) of proposed crossing 8.2 (Sept 2011).*



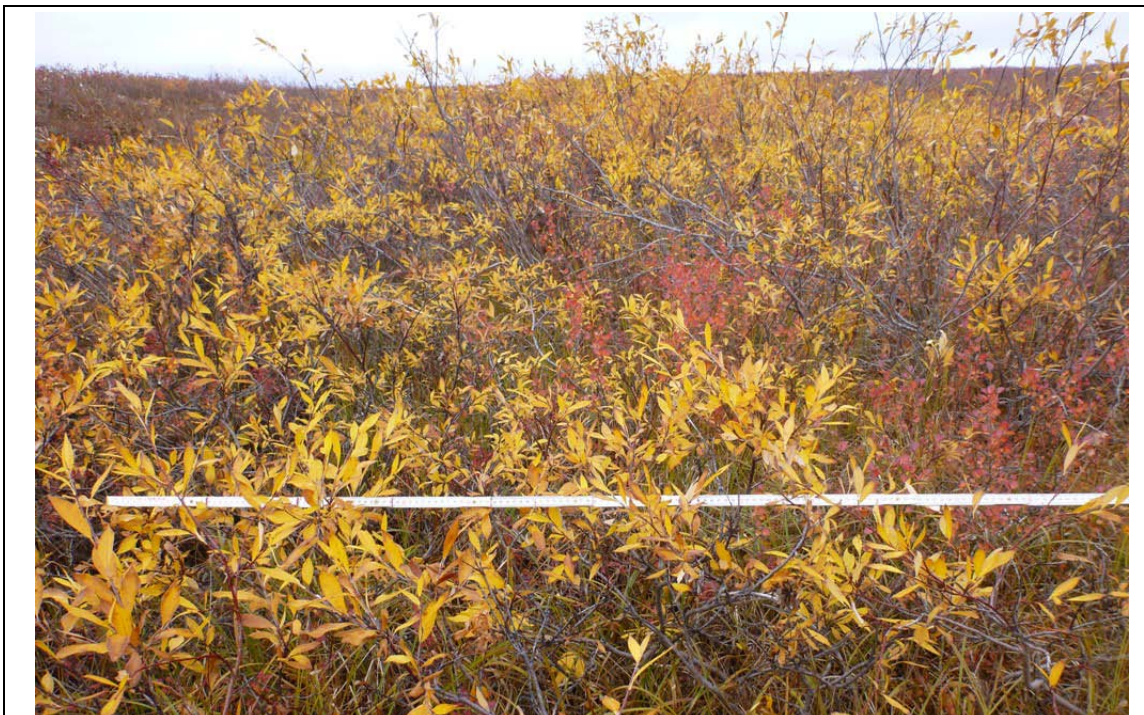
*Photo 2: View looking downstream (east) of proposed crossing 8.2 (Sept 2011).*





## APPENDIX III PHOTOGRAPHS

### Site: 25.8



*Photo 1: View looking upslope(north) of proposed crossing 25.8 (Sept 2011).*



*Photo 2: View looking downslope (south) of proposed crossing 25.8 looking South (Sept 2011).*





## APPENDIX III PHOTOGRAPHS

### Site: 26.5



*Photo 1: View looking upstream (northwest) of proposed crossing 26.5 (Sept 2011).*



*Photo 2: View looking downstream (southeast) of proposed crossing 26.5 (Sept 2011).*



## APPENDIX III PHOTOGRAPHS



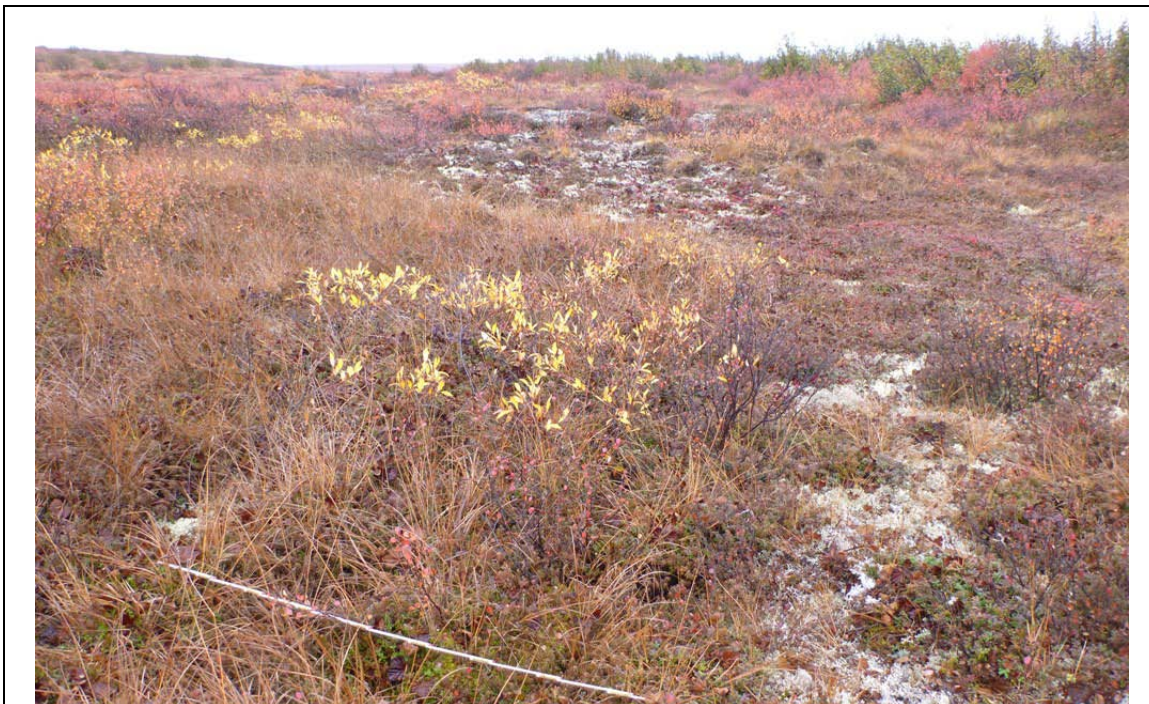
*Photo 3: View looking upstream (southeast) of proposed crossing 26.5 (Sept 2011).*



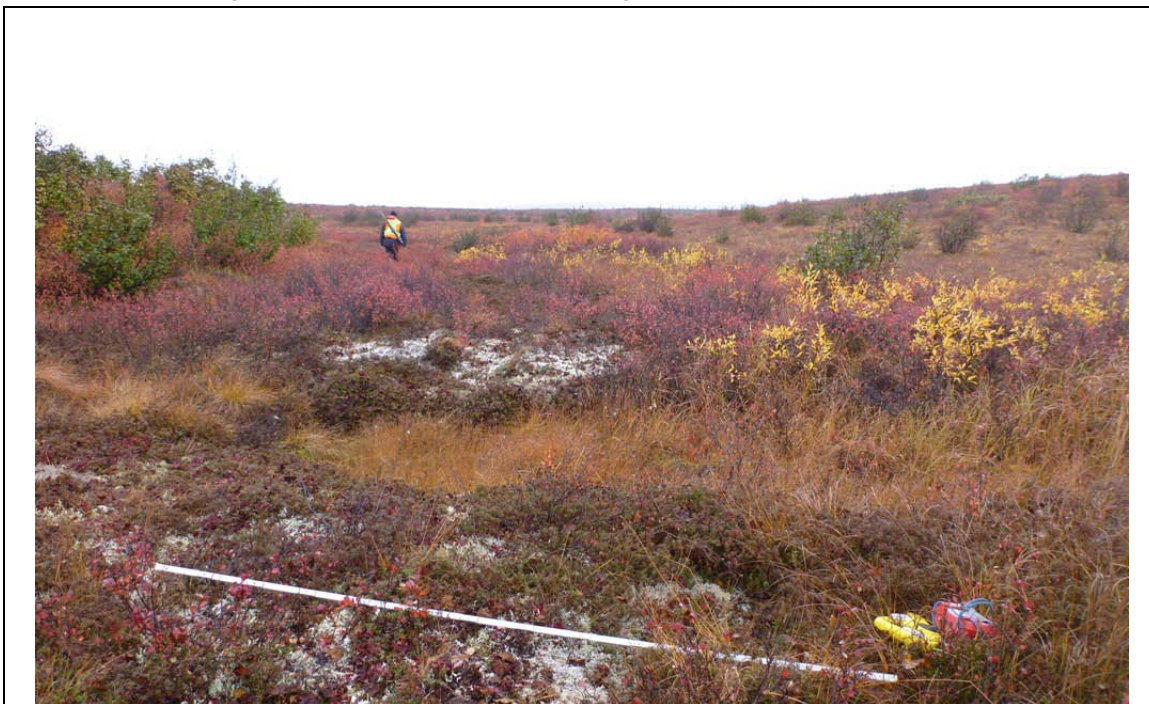


## APPENDIX III PHOTOGRAPHS

### Site: 28.9



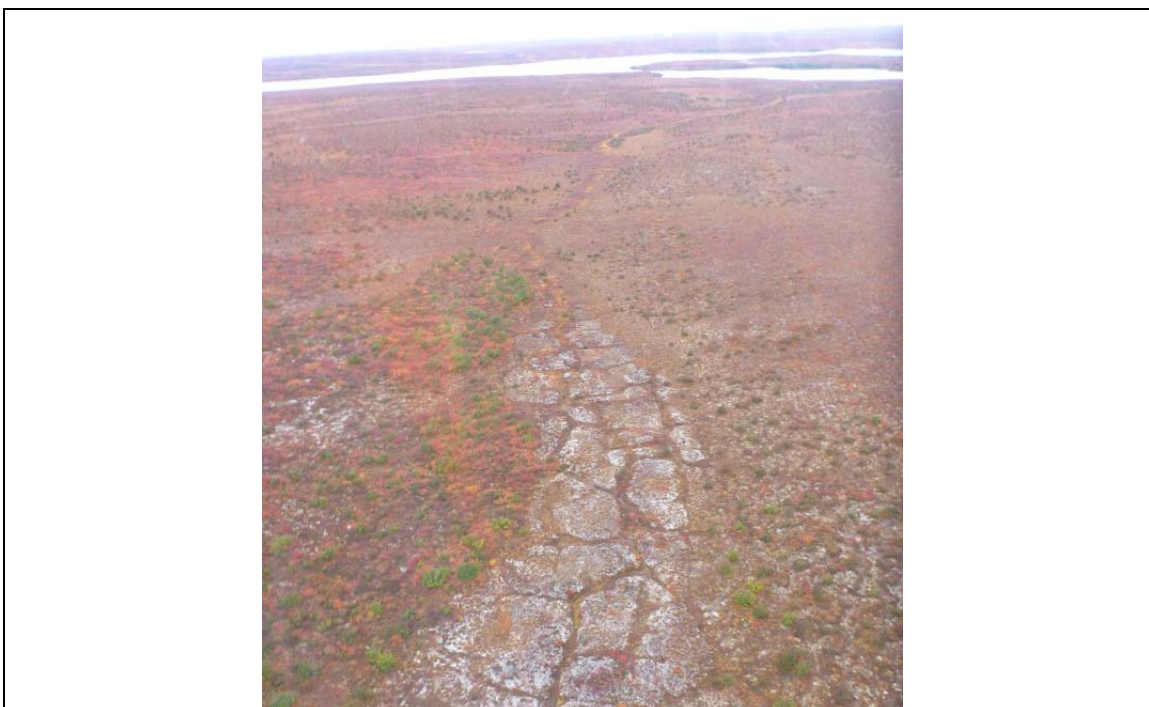
*Photo 1: View looking upslope (north) of proposed crossing 28.9 (Sept 2011).*



*Photo 2: View looking downslope (south) of proposed crossing 28.9 (Sept 2011).*



## APPENDIX III PHOTOGRAPHS



*Photo 3: Aerial view looking downslope (south) of proposed crossing 28.9 (Sept 2011).*





## APPENDIX III PHOTOGRAPHS

### Site: 31.1



*Photo 1: View looking upstream (north) of proposed crossing 31.1 (Sept 2011).*



*Photo 2: View looking downstream (south) of proposed crossing 31.1 (Sept 2011).*



## APPENDIX III PHOTOGRAPHS



*Photo 3: Aerial view looking upstream (north) of proposed crossing 31.1 (Sept 2011).*





## APPENDIX III PHOTOGRAPHS

### Site: 39.4



*Photo 1: View looking upstream (west) of proposed crossing 39.4 (Sept 2011).*



*Photo 2: View looking downstream (east) of proposed crossing 39.4 (Sept 2011).*



## APPENDIX III PHOTOGRAPHS



*Photo 3: Aerial view looking downstream (east) of proposed crossing 39.4 (Sept 2011).*





## APPENDIX III PHOTOGRAPHS

### Site: 41.4



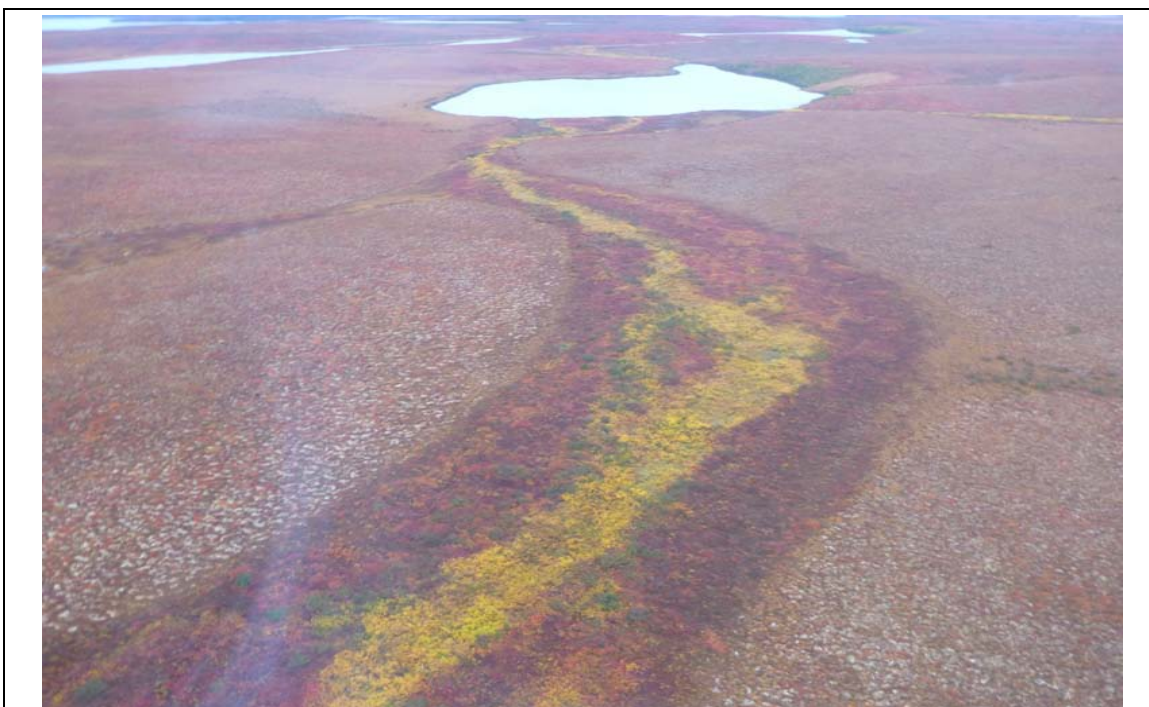
*Photo 1: View looking upstream (west) of proposed crossing 41.4 (Sept 2011).*



*Photo 2: View looking downstream (east) of proposed crossing 41.4 (Sept 2011).*



## APPENDIX III PHOTOGRAPHS



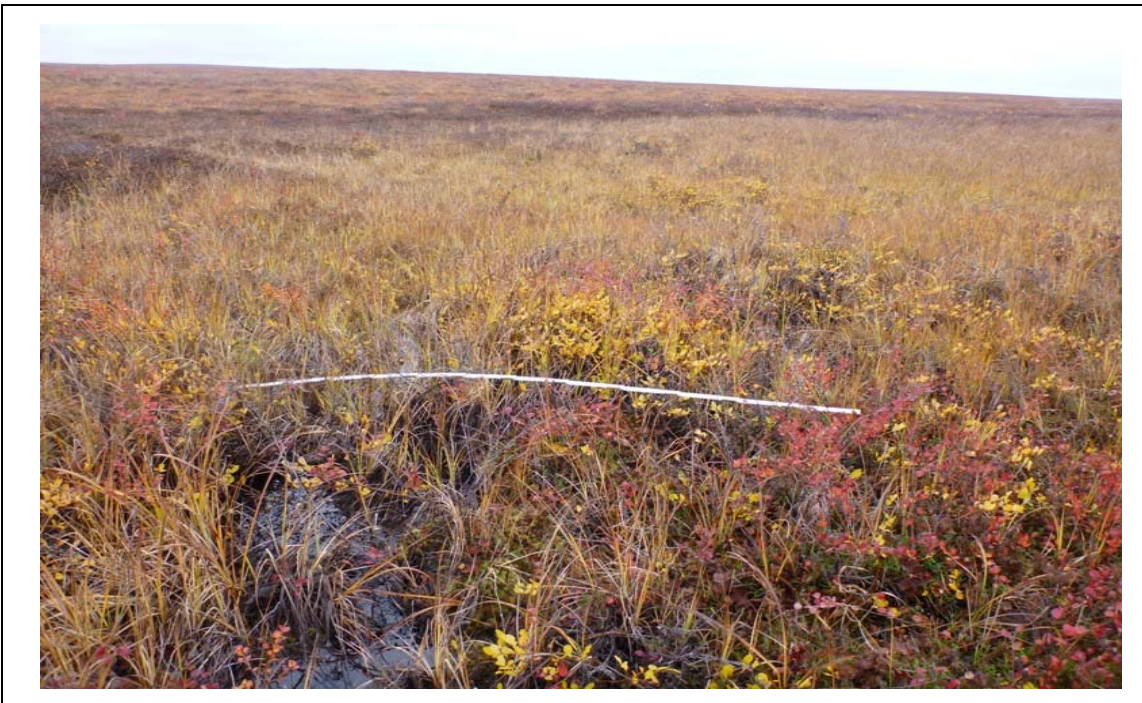
*Photo 3: Aerial view looking downstream (east) of proposed crossing 41.4 (Sept 2011).*



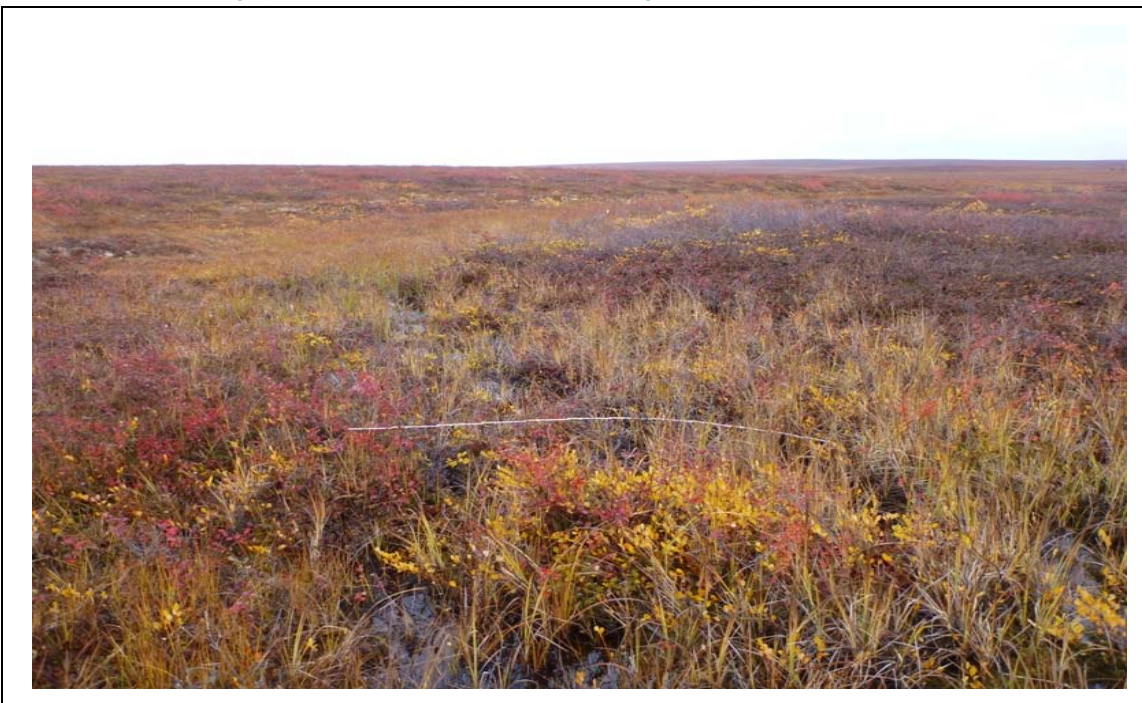


## APPENDIX III PHOTOGRAPHS

### Site: 42.5



*Photo 1: View looking upstream (west) of proposed crossing 42.5 (Sept 2011).*



*Photo 2: View looking downstream (east) of proposed crossing 42.5 (Sept 2011).*



## APPENDIX III PHOTOGRAPHS



*Photo 3: View looking downstream (east) of proposed crossing 42.5 (Sept 2011).*



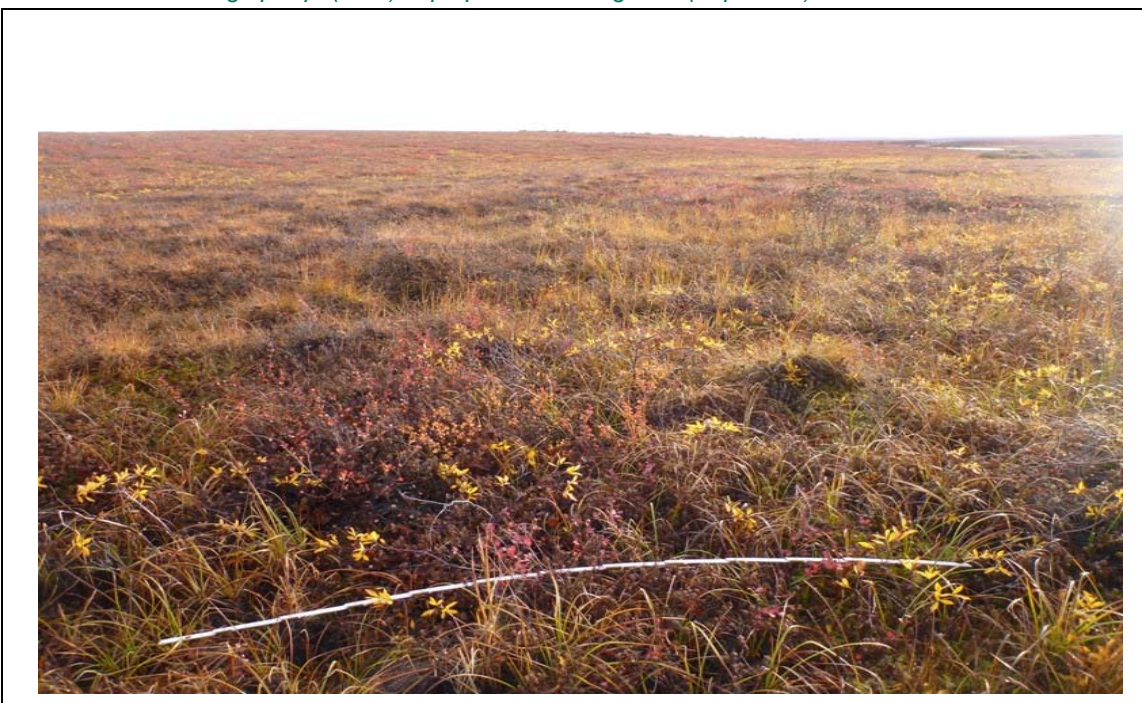


## APPENDIX III PHOTOGRAPHS

### Site: 43.9



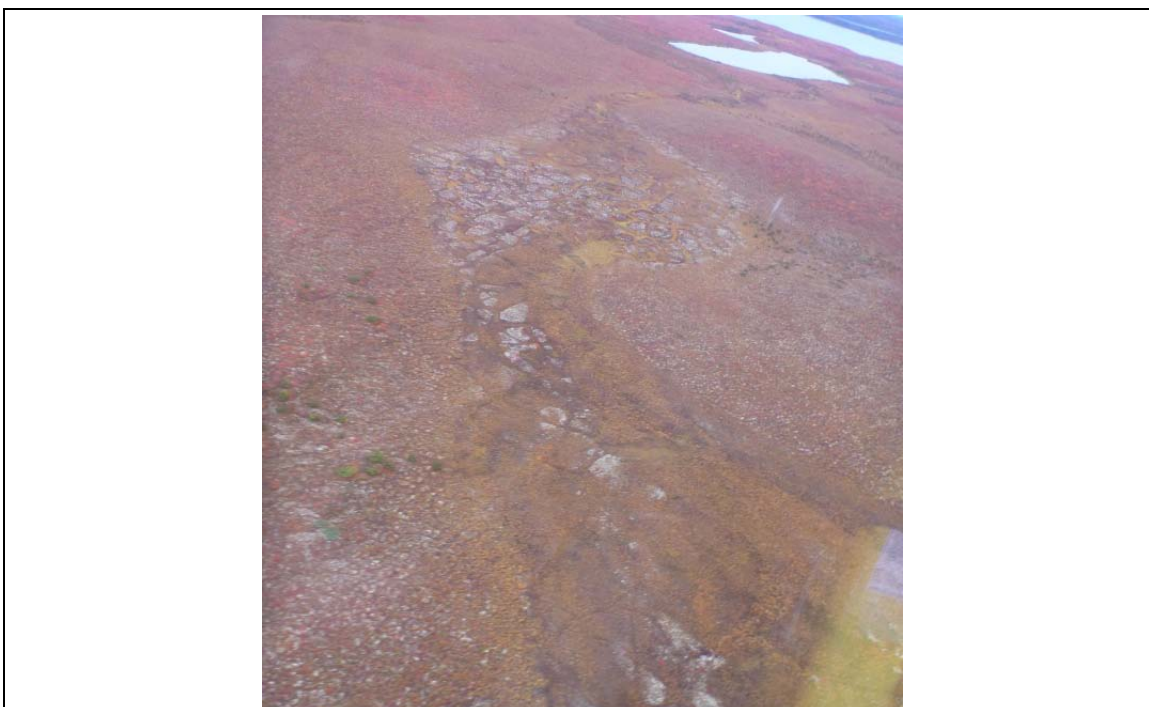
*Photo 1: View looking upslope (west) of proposed crossing 43.9 (Sept 2011).*



*Photo 2: View looking downslope (east) of proposed crossing 43.9 (Sept 2011).*



## APPENDIX III PHOTOGRAPHS



*Photo 3: View looking downslope(east) of proposed crossing 43.9 (Sept 2011).*





## APPENDIX III PHOTOGRAPHS

### Site: 45.5



*Photo 1: View looking upstream (west) of proposed crossing 45.5 (Sept 2011).*



*Photo 2: View looking downstream (east) of proposed crossing 45.5 (Sept 2011).*



## APPENDIX III PHOTOGRAPHS



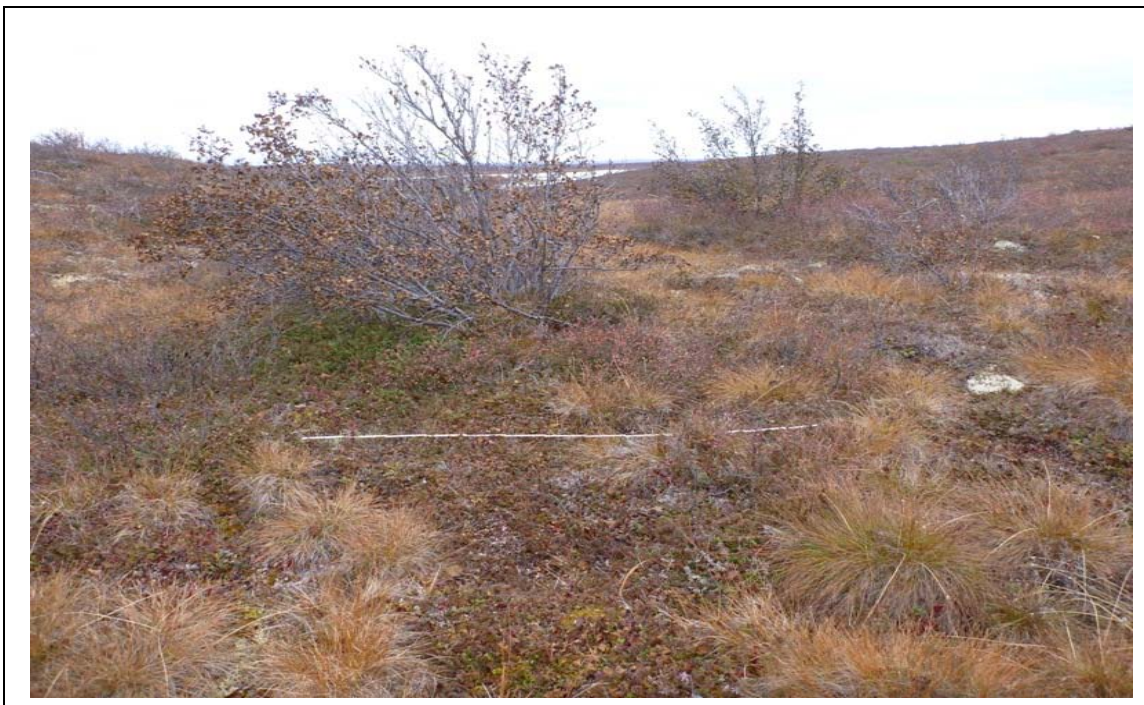
*Photo 2: Aerial view looking downstream (east) of proposed crossing 45.5 (Sept 2011).*





## APPENDIX III PHOTOGRAPHS

### Site: 46.8



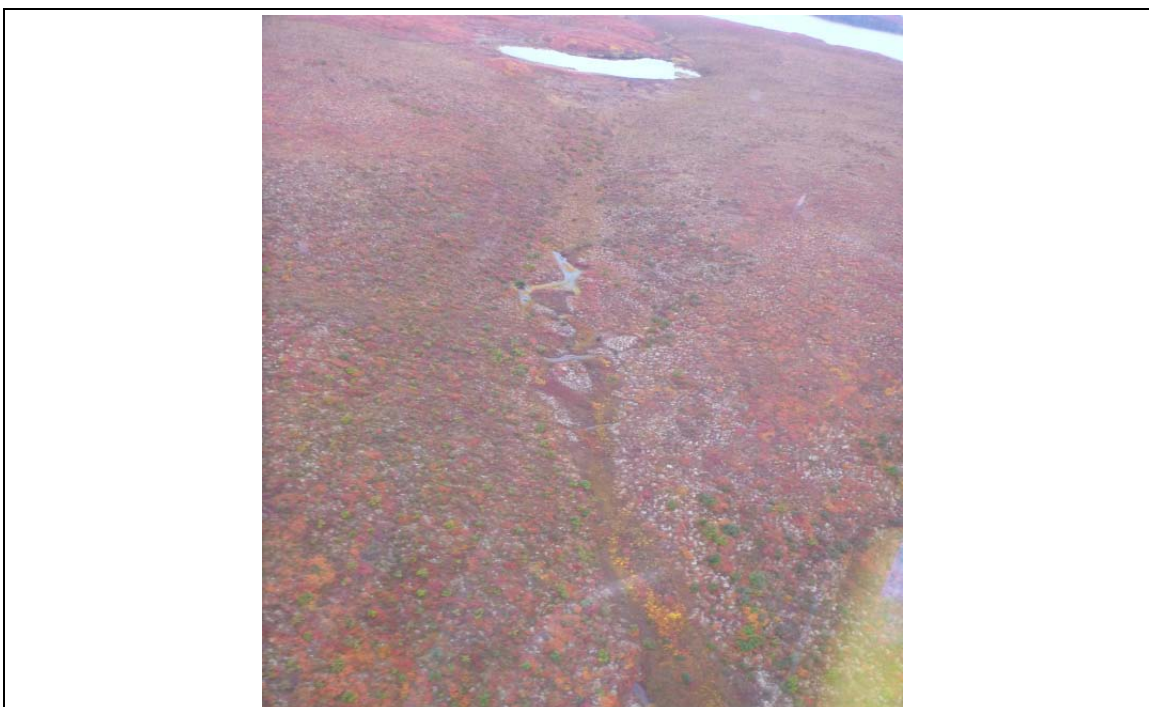
*Photo 1: View looking upstream (west) of proposed crossing 46.8 (Sept 2011).*



*Photo 2: View looking downstream (east) of proposed crossing 46.8 (Sept 2011).*



## APPENDIX III PHOTOGRAPHS



*Photo 3: Aerial view looking downstream (east) of proposed crossing 46.8 (Sept 2011).*





## APPENDIX III PHOTOGRAPHS

### Site: 52.4



*Photo 1: View looking upstream (west) of proposed crossing 52.4 (Sept 2011).*



*Photo 2: View looking downstream (east) of proposed crossing 52.4 (Sept 2011).*



## APPENDIX III PHOTOGRAPHS



*Photo 3: Aerial view looking downstream (east) of proposed crossing 52.4 (Sept 2011).*





## APPENDIX III PHOTOGRAPHS

### Site: 52.8



*Photo 1: View looking upslope (west) of proposed crossing 52.8 (Sept 2011).*



*Photo 2: View looking downslope (east) of proposed crossing 52.8 (Sept 2011).*



## APPENDIX III PHOTOGRAPHS



*Photo 3: Aerial view looking downslope (east) of proposed crossing 52.8 (Sept 2011).*





## APPENDIX III PHOTOGRAPHS

### Site: 54.1



*Photo 1: View looking upstream (west) of proposed crossing 54.1 (Sept 2011).*



*Photo 2: View looking downstream (east) of proposed crossing 54.1 (Sept 2011).*



## APPENDIX III PHOTOGRAPHS



*Photo 3: Aerial view looking upstream (west) of proposed crossing 54.1 (Sept 2011).*





## APPENDIX III PHOTOGRAPHS

### Site: 54.9



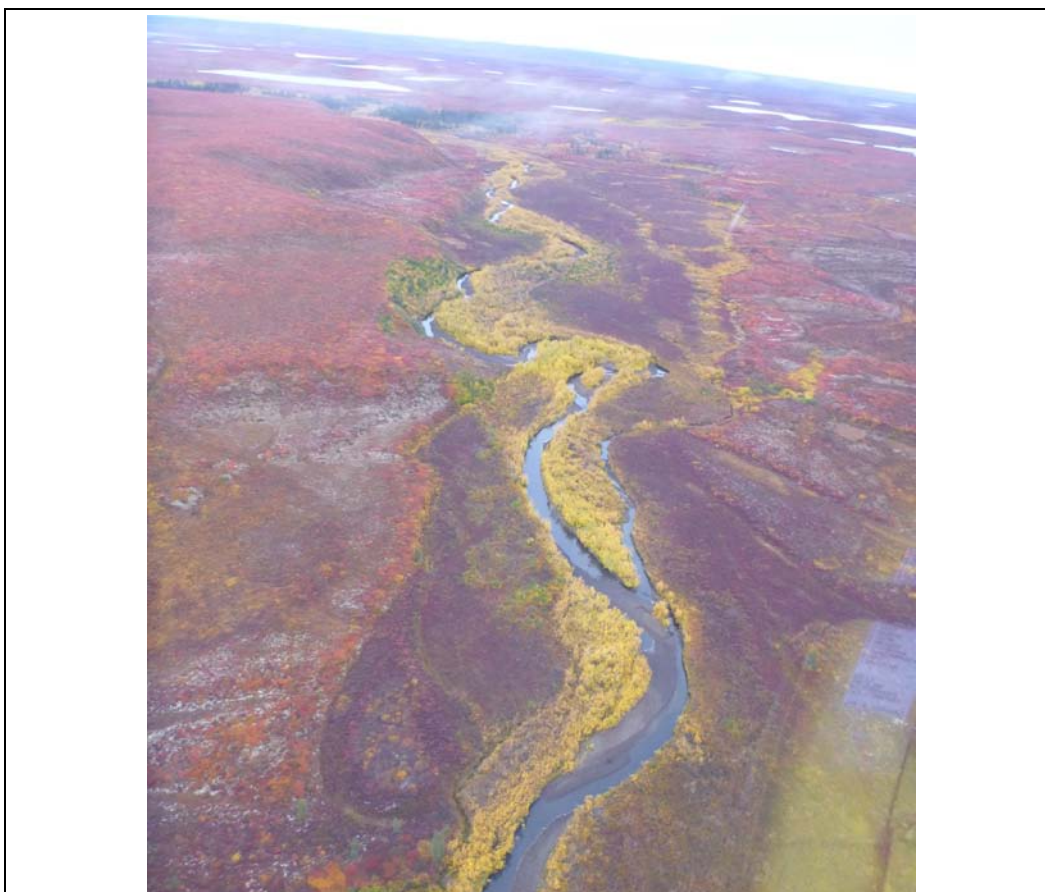
*Photo 1: View looking upstream (west) of proposed crossing 54.9 (Sept 2011)*



*Photo 2: View looking downstream (east) of proposed crossing 54.9 (Sept 2011)*



## APPENDIX III PHOTOGRAPHS



*Photo 3: Aerial view looking upstream (west) of proposed crossing 54.9 (Sept 2011).*





## APPENDIX III PHOTOGRAPHS

### Site: 66.1



*Photo 1: View looking upstream (west) of proposed crossing 66.1 (Sept 2011)*



*Photo 2: View looking downstream (east) of proposed crossing 66.1 (Sept 2011)*



## APPENDIX III PHOTOGRAPHS



*Photo 3: Aerial view looking downstream (east) of proposed crossing 66.1 (Sept 2011).*





## APPENDIX III PHOTOGRAPHS

### Site: 76.0



*Photo 1: View looking upslope (west) of proposed crossing 76.0 (Sept 2011).*



*Photo 2: View looking downslope (east) of proposed crossing 76.0 (Sept 2011).*



## APPENDIX III PHOTOGRAPHS



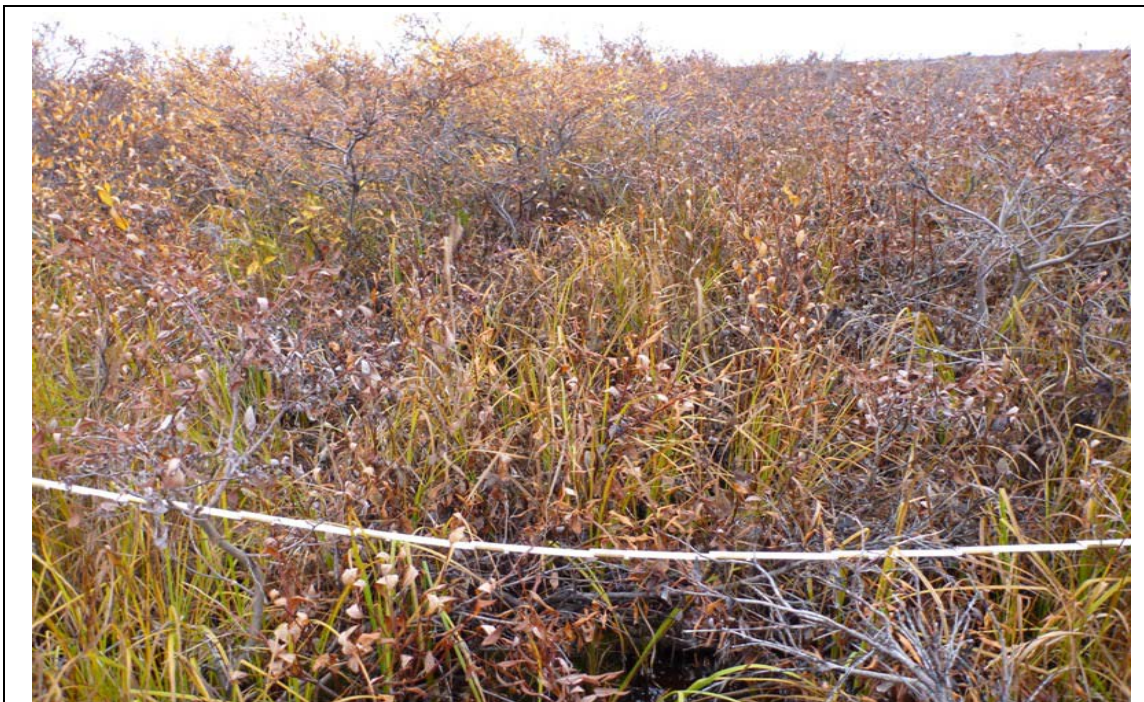
*Photo 3: Aerial view looking upslope (west) of proposed crossing 76.0 (Sept 2011).*



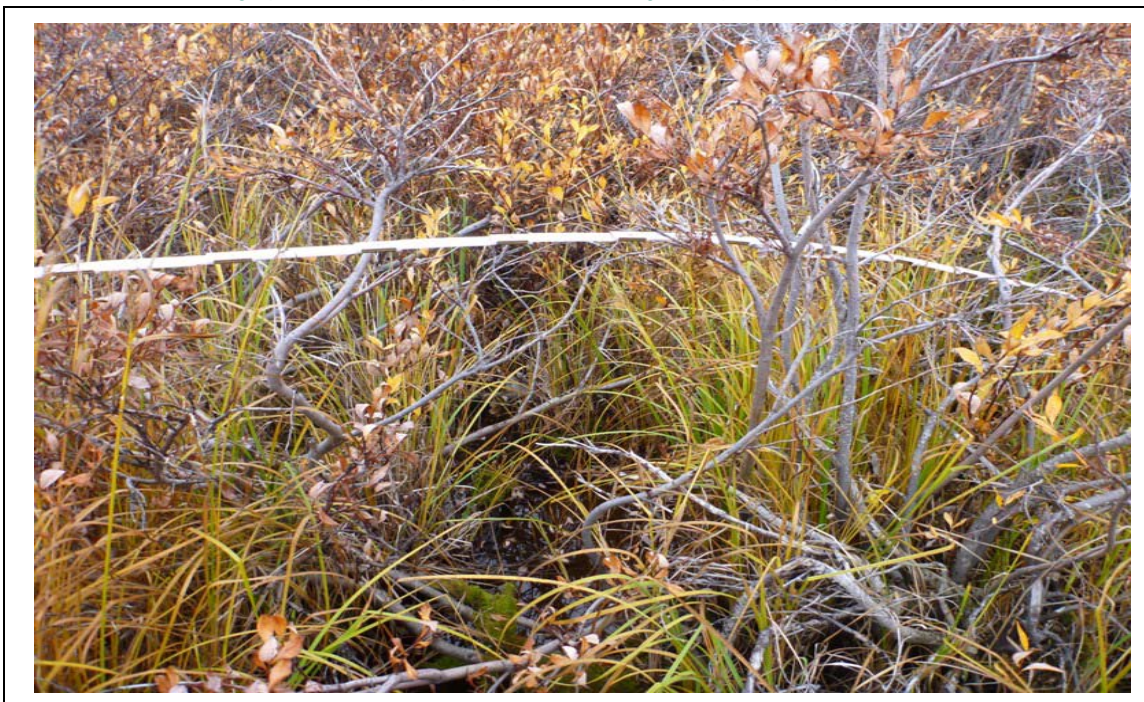


## APPENDIX III PHOTOGRAPHS

### Site: 76.3



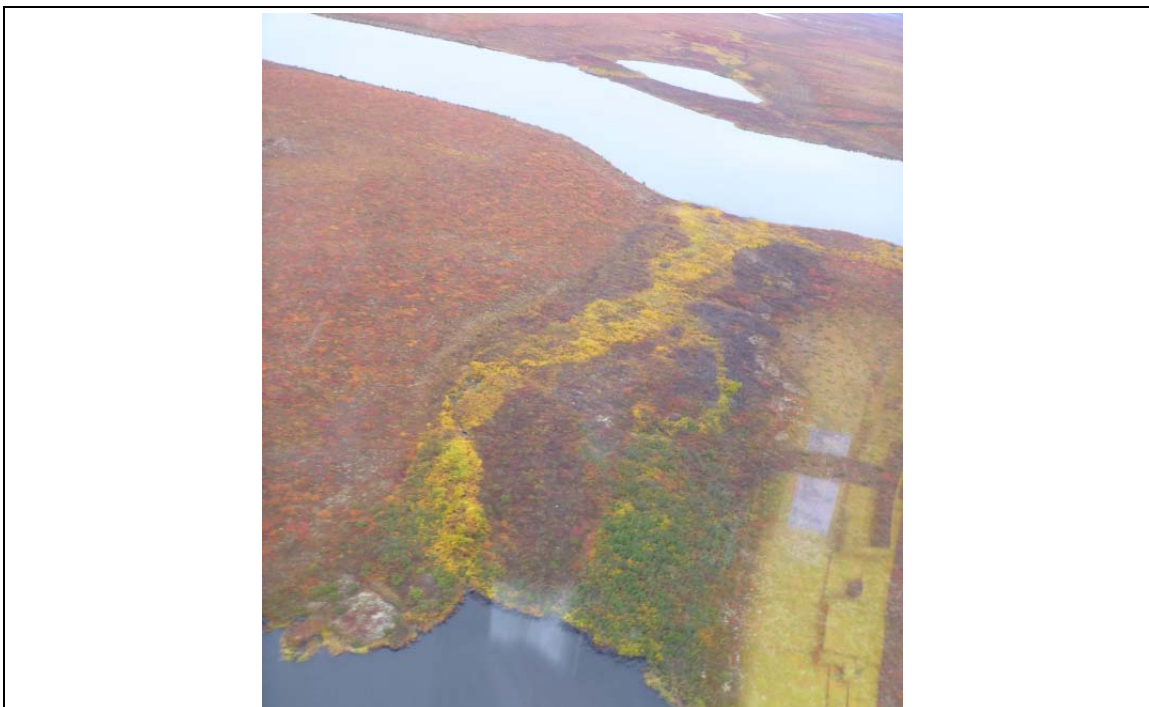
*Photo 1: View looking upstream (west) of proposed crossing 76.3 (Sept 2011).*



*Photo 2: View looking downstream (east) of proposed crossing 76.3 (Sept 2011).*



## APPENDIX III PHOTOGRAPHS



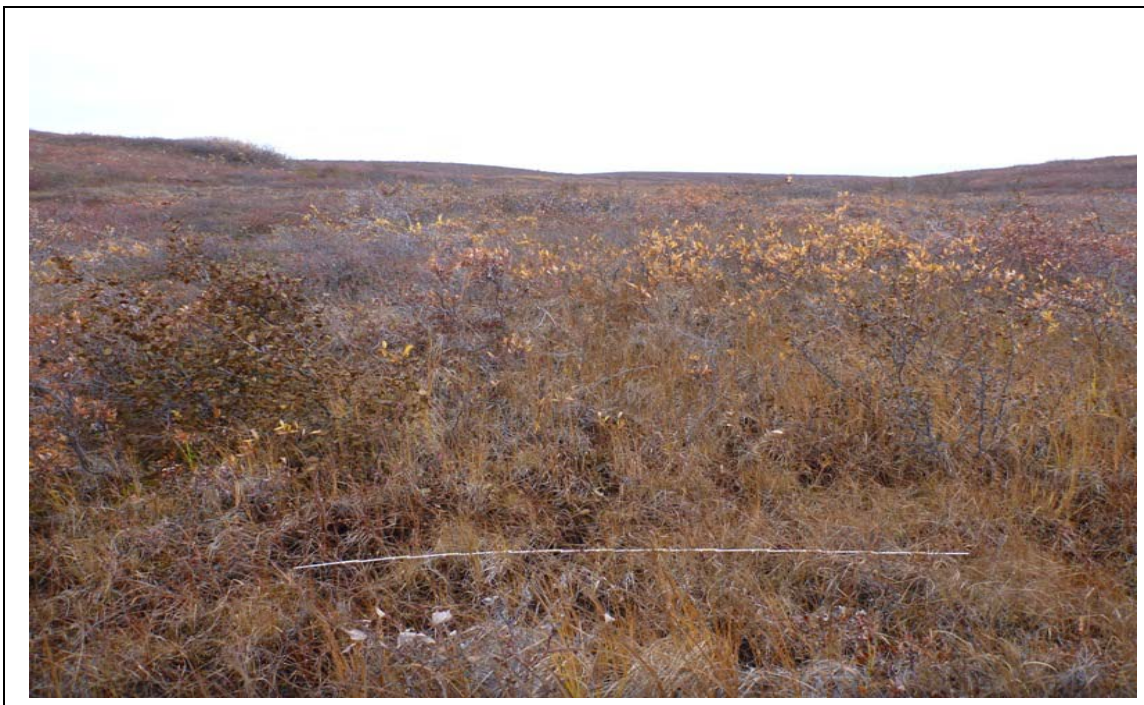
*Photo 3: Aerial view looking downstream (southeast) of proposed crossing 76.3 (Sept 2011).*



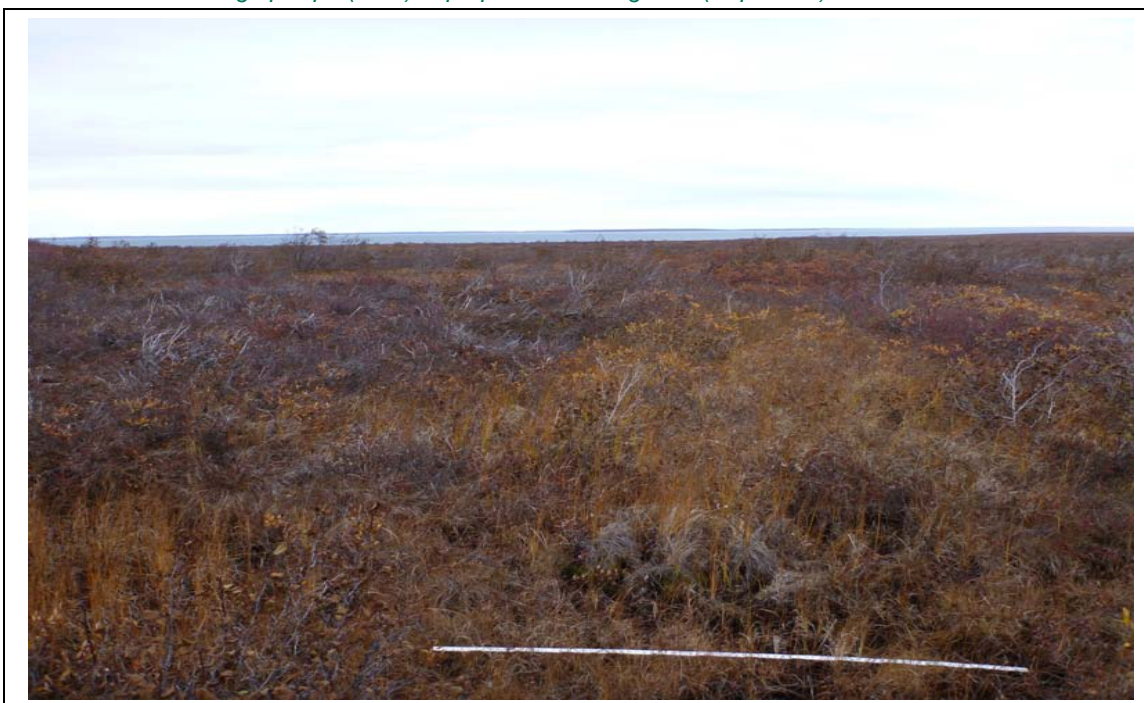


## APPENDIX III PHOTOGRAPHS

### Site: 78.7



*Photo 1: View looking upslope (west) of proposed crossing 78.7 (Sept 2011).*



*Photo 2: View looking downslope (east) of proposed crossing 78.7 (Sept 2011).*



## APPENDIX III PHOTOGRAPHS



*Photo 3: Aerial view looking upslope (west) of proposed crossing 78.7 (Sept 2011).*





## APPENDIX III PHOTOGRAPHS

### Site: 82.7



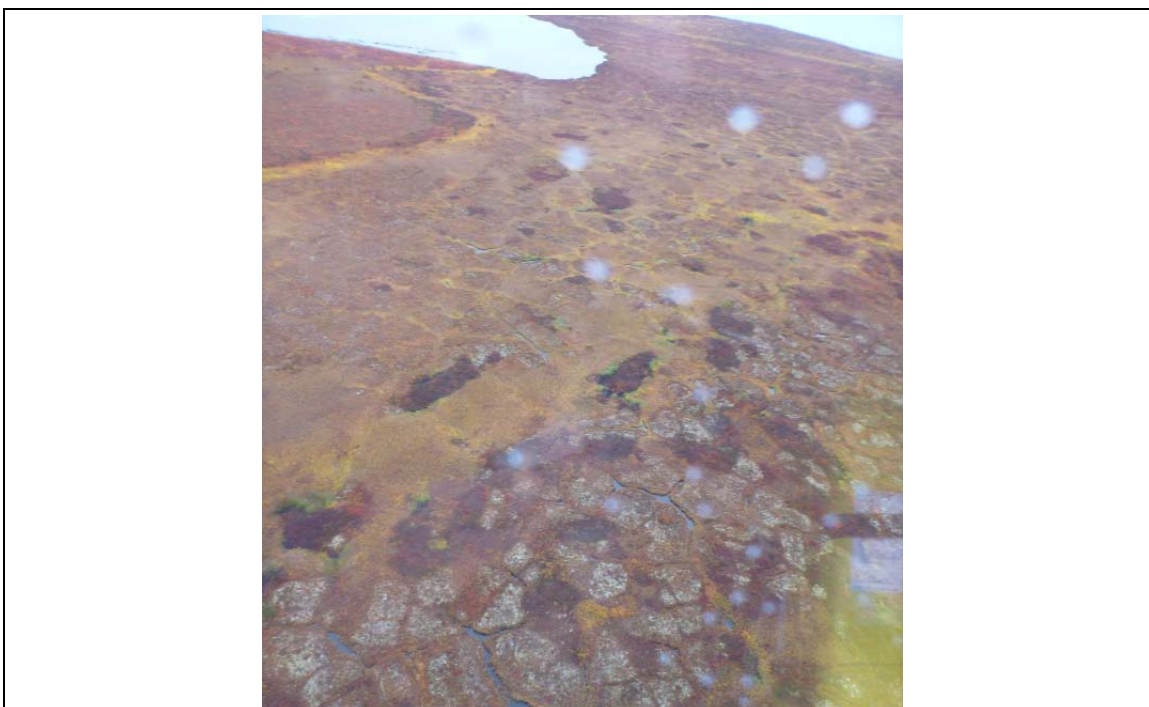
*Photo 1: View looking upstream (west) of proposed crossing 82.7 (Sept 2011).*



*Photo 2: View looking downstream (east) of proposed crossing 82.7 (Sept 2011).*



## APPENDIX III PHOTOGRAPHS



*Photo 3: Aerial view looking downstream (east) of proposed crossing 82.7 (Sept 2011).*





## APPENDIX III PHOTOGRAPHS

### Site: 85.6



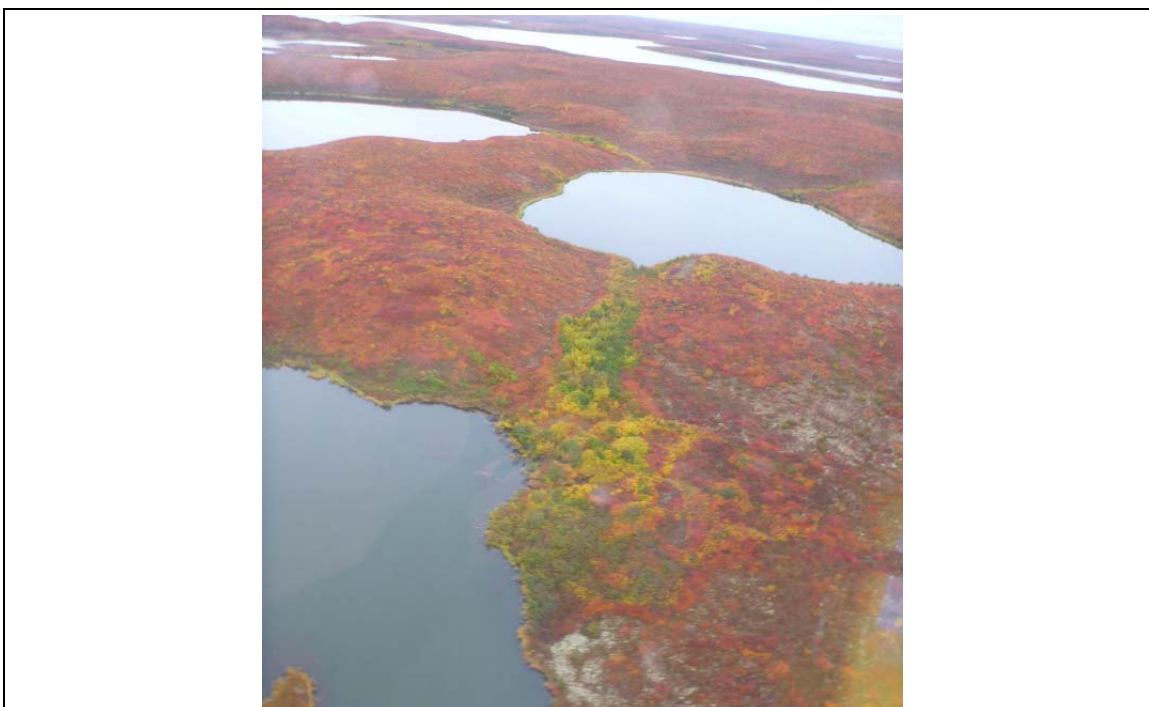
*Photo 1: View looking upstream (west) of proposed crossing 85.6 (Sept 2011).*



*Photo 2: View looking downstream (east) of proposed crossing 85.6 (Sept 2011).*



## APPENDIX III PHOTOGRAPHS



*Photo 3: Aerial view looking upstream (east) of proposed crossing 85.6 (Sept 2011).*





## APPENDIX III PHOTOGRAPHS

### Site: 88.2



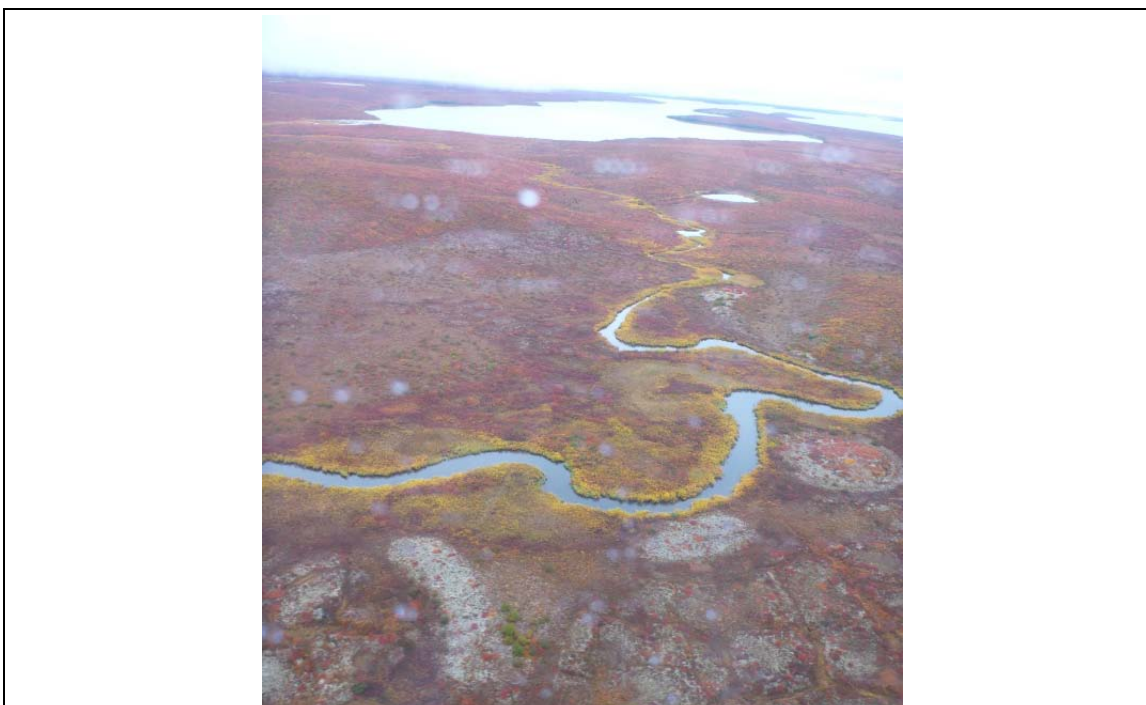
*Photo 1: View looking upstream (west) of proposed crossing 88.2 (Sept 2011).*



*Photo 2: View looking downstream (east) of proposed crossing 88.2 (Sept 2011).*



## APPENDIX III PHOTOGRAPHS



*Photo 3: Aerial view looking upstream (west) of proposed crossing 88.2 (Sept 2011).*